

Virginia Maritime Association

“Voice of the Port”



TRB Marine Board
Spring Meeting
April 8, 2014

U.S. Marine Transportation System



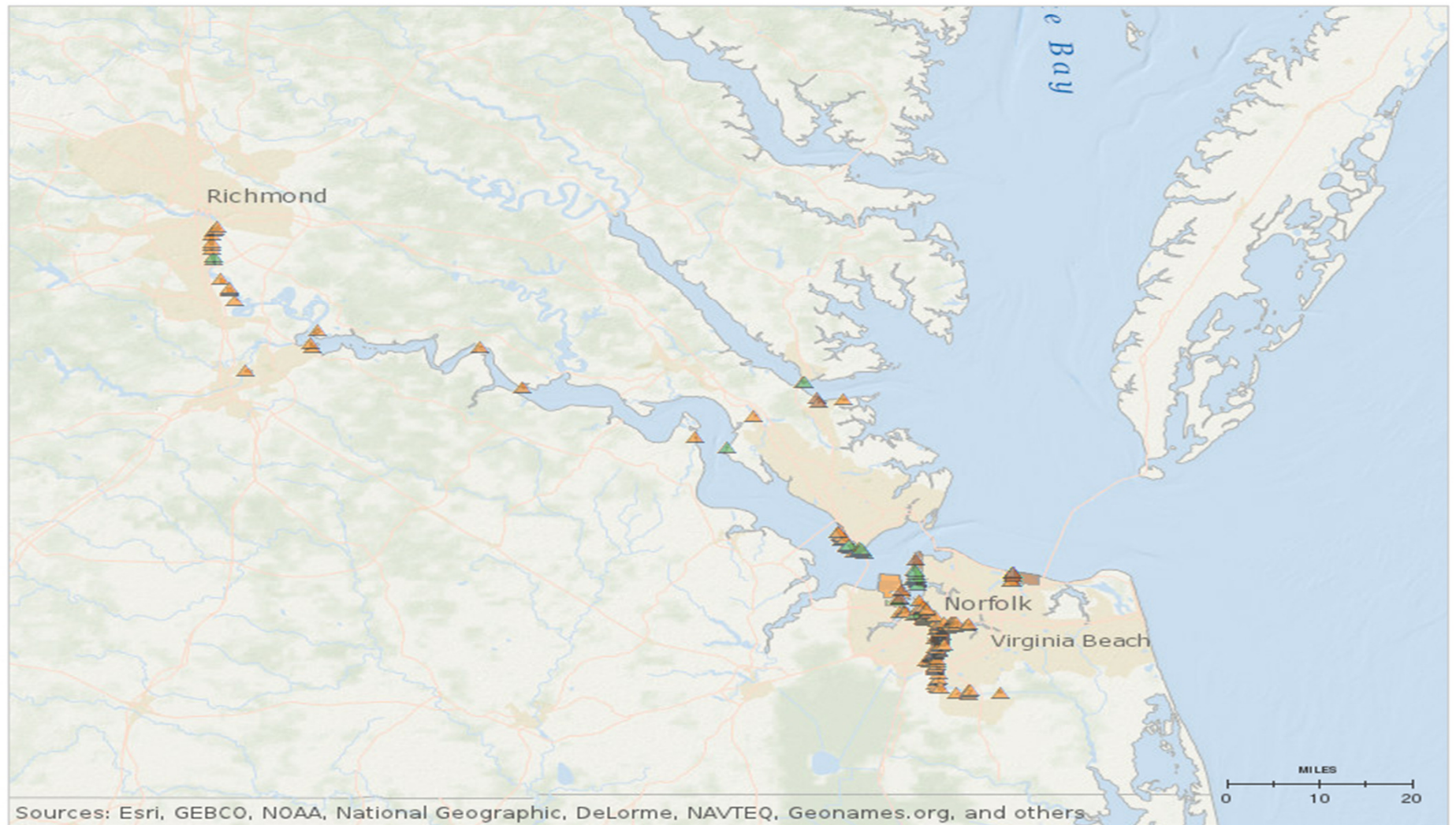
- ✓ Harbor channels: 1,000
- ✓ Inland & coastal waterways: 25,000 miles
- ✓ Cargo terminals: 1,914
- ✓ Pipeline connections: 460,000 miles
- ✓ Bridges: 18,000
- ✓ Lock chambers: 238
- ✓ Aids to navigation: 97,000
- ✓ Connecting rail: 174,000 miles
- ✓ Connecting interstate highways: Over 45,000 miles

MTS Economic Contribution

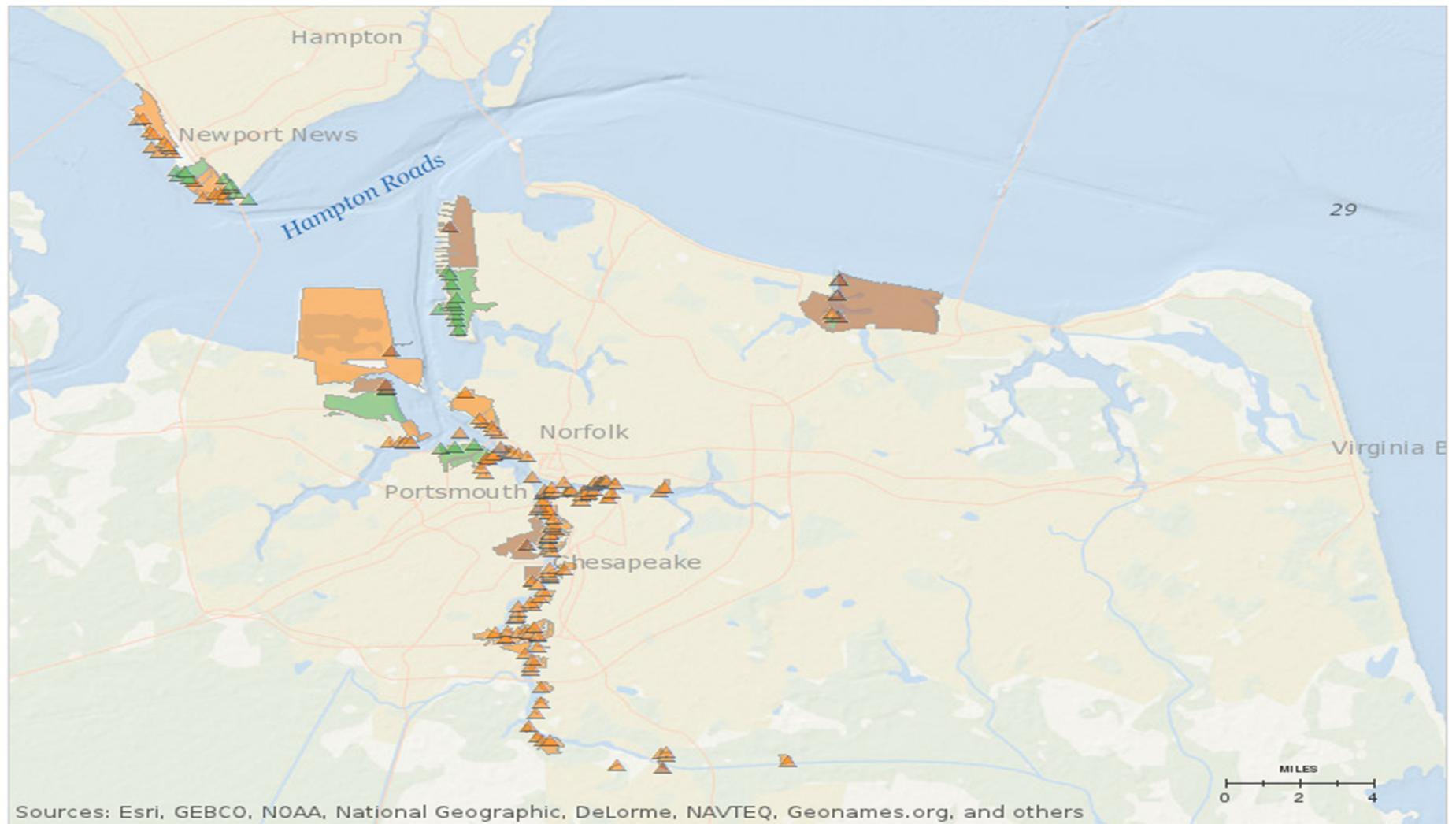


- ✓ Over 13 million direct & indirect jobs
- ✓ \$649 billion annually in wages & expenditures
- ✓ \$212 billion in annual port sector federal/state/local taxes
- ✓ Over 29 million loaded TEUs (twenty-foot equivalent units) and 1.3 million metric tons of foreign traffic were handled in 2011, with a value of nearly \$1.7 trillion
- ✓ In 2011 75.0% by weight of U.S.-international merchandise trade was transported by water

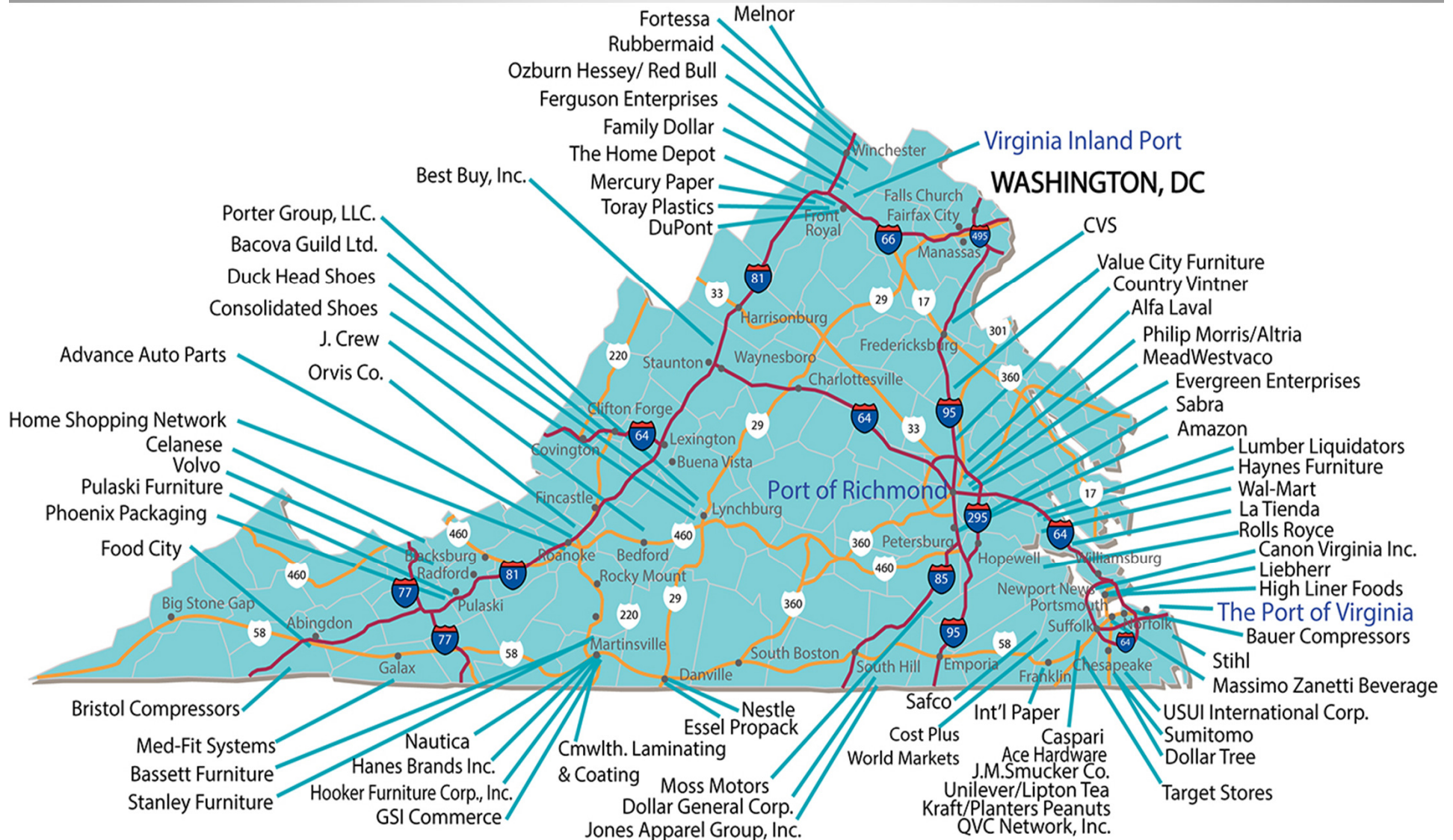
Ports of Virginia



Ports of Virginia



Selected Manufacturing & Distribution Facilities



Ports of Virginia



- ✓ **2nd largest on East Coast in tonnage & 3rd in containers**
- ✓ **Largest ship building & repair complex on East Coast**
- ✓ **2,840 commercial ship arrivals in 2013**
- ✓ **Over 80 million tons of cargo moved – containers, coal, autos, steel, paper, grains, cement, fuel, minerals, fertilizers, aggregates, etc.**
- ✓ **Nearly 1 in 10 Virginia jobs & over \$41 billion in business revenue connected to the Port**



THANK YOU

David White

Vice President

Virginia Maritime Association

757-622-2639

david@portofhamptonroads.com