



Doug Morris
Chief,
Office of Offshore
Regulatory Programs



Overview

- BSEE: Mission, History & Who We Are
- Regulatory Challenges
- Regulatory Update
 - New approach
 - Recent regulations and priorities
- BSEE's Forward Focus

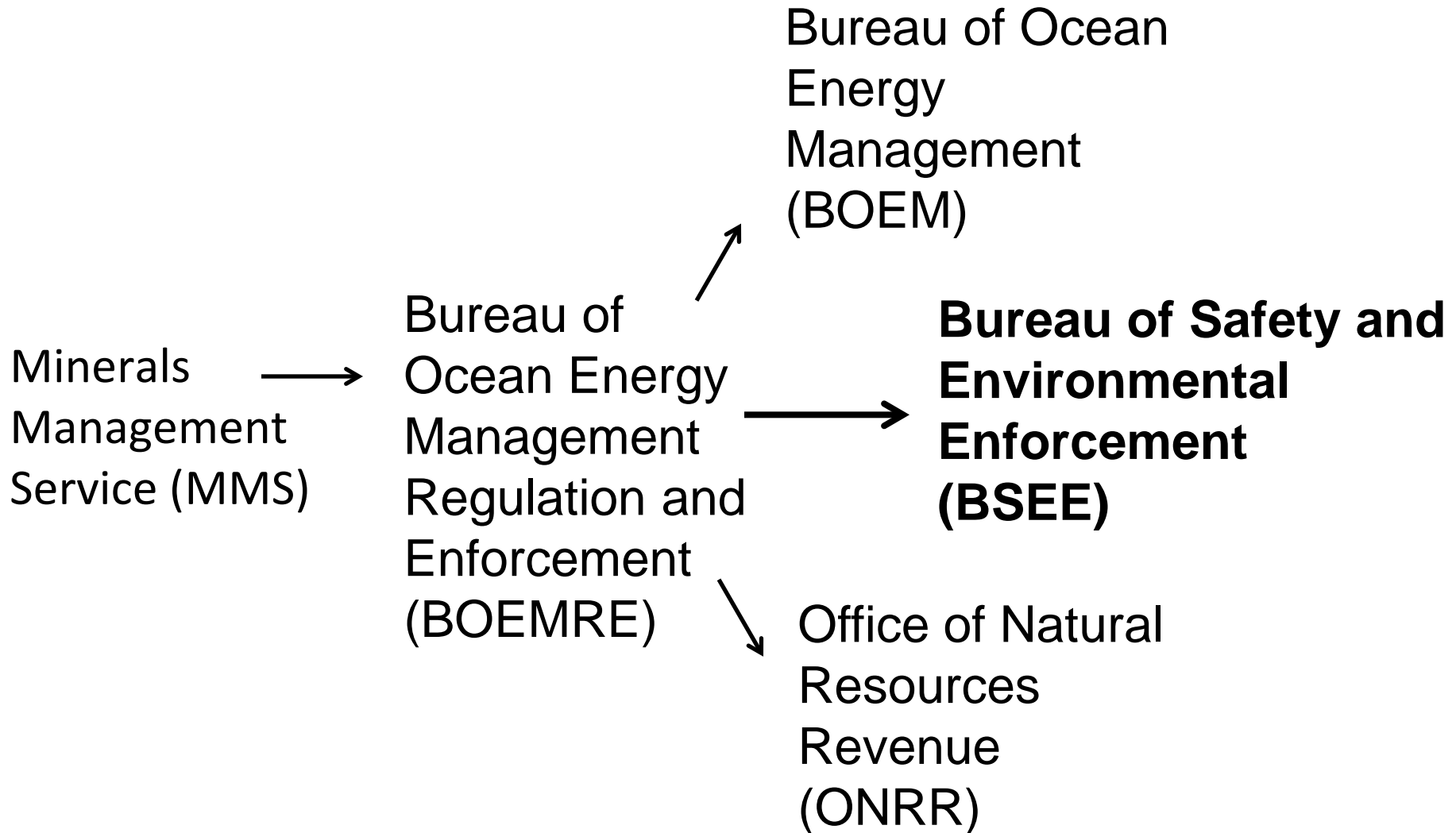


BSEE: Mission

*To promote safety, protect the environment,
and conserve resources offshore through
vigorous regulatory oversight and
enforcement.*



BSEE: History





BSEE: Who We Are

- Staffing: 619 Employees
 - 153 engineers
 - 105 inspectors
- Locations
 - Headquartered in DC & Herndon, VA
 - Three regional offices
 - Gulf of Mexico – New Orleans, LA
 - Pacific – Camarillo, CA
 - Alaska – Anchorage, AK



Regulatory Challenges

- High activity level
- Diverse operations
- Operating and environmental conditions





New Regulatory Approaches

- A hybrid of performance and prescriptive requirements
- Life cycle approach toward critical equipment
- Third party certification
- Use of consensus standards as baseline
- Improve safety culture



Recent Regulatory Actions

- Safety Culture Policy Statement
- Proposed Rule on Production Safety Systems
- Safety & Environmental Management Systems



Next Regulatory Priorities

- Proposed Rule on Blowout Preventers
- Proposed Rule on Alaska
- Proposed Crane Rule
- Potential Rule on Aviation



BSEE's Forward Focus

- Risk Assessment and Management
 - Better data and analytical tools
 - Risk-based inspections
- Leading and Lagging Indicators
 - Goal of increasing both process and personal safety
 - Identification and collection of relevant data
 - Near-miss data collection
 - Real-time monitoring



BSEE's Forward Focus

- Best Available and Safest Technology
 - Increase innovation and adoption of new technology
- Equipment Reliability
 - Lifecycle oversight
- Training of OCS Personnel



BSEE's Forward Focus

- Ocean Energy Safety Institute
 - Texas A&M Engineering Experiment Station
 - Recommendations and Technical Assistance to BSEE
 - Promote collaboration



Safety at All Levels, at All Times