

e-Navigation: USACE Perspective

W. Jeff Lillycrop
Technical Director
Engineer Research and Development Center
US Army Corps of Engineers

Marine Board Fall Meeting
November 19, 2013



**US Army Corps
of Engineers®**



Outline

USACE Vision & Implementation Status

Challenge



BUILDING STRONG®

USACE Vision & Implementation

Automate existing data requirements

- ▶ Lock performance & usage
- ▶ Cargo tracking
- ▶ Dredging and dredge material placement
- ▶ Navigation channel availability
- ▶ Business data

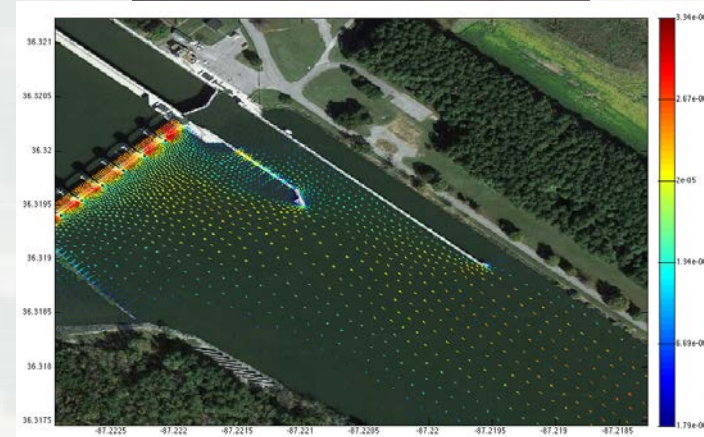
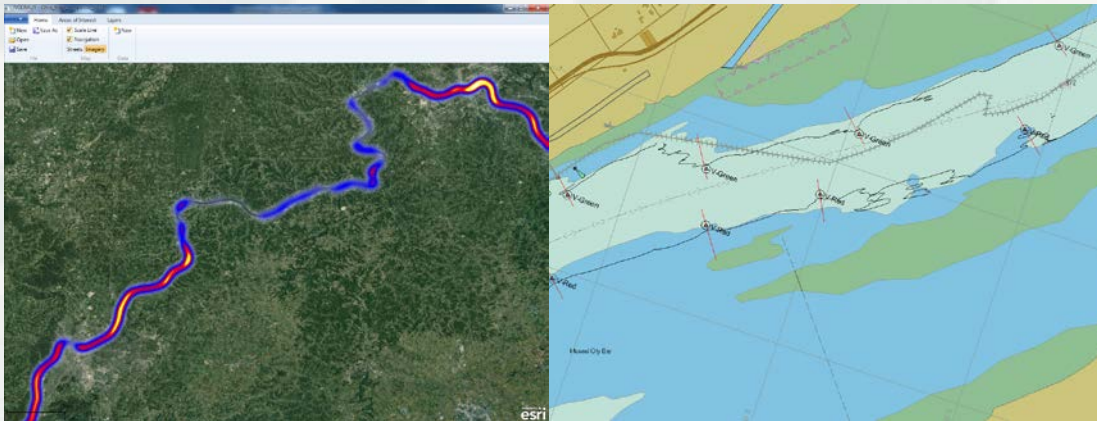
	All Traffic Types (Domestic & Foreign)					Domestic					Foreign	
	All Traffic Directions	Receipts	Shipments	Intrawaterway	Through	All Traffic Directions	Receipts	Shipments	Intrawaterway	Through	All Traffic	All Traffic
All Commodities	215,077,094	45,362,166	47,381,849	84,295,988	38,037,091	215,077,094	45,362,166	47,381,849	84,295,988	38,037,091		
Total Coal/Lignite and Coal Coke	122,437,012	26,199,901	23,644,994	57,857,798	14,734,319	122,437,012	26,199,901	23,644,994	57,857,798	14,734,319		
Subtotal Coal	122,437,012	26,199,901	23,644,994	57,857,798	14,734,319	122,437,012	26,199,901	23,644,994	57,857,798	14,734,319		
1100 Coal & Lignite	120,987,757	25,378,753	23,406,649	57,739,562	14,462,793	120,987,757	25,378,753	23,406,649	57,739,562	14,462,793		
1200 Coal Coke	1,449,255	821,148	238,345	118,236	271,526	1,449,255	821,148	238,345	118,236	271,526		
Total Petroleum and Petroleum Products	13,273,936	2,399,748	3,418,770	5,145,905	2,309,513	13,273,936	2,399,748	3,418,770	5,145,905	2,309,513		
Subtotal Crude Petroleum	137,957	0	105,998	0	31,959	137,957	0	105,998	0	31,959		
2100 Crude Petroleum	137,957	0	105,998	0	31,959	137,957	0	105,998	0	31,959		
Subtotal Petroleum Products	13,135,979	2,399,748	3,312,772	5,145,905	2,277,554	13,135,979	2,399,748	3,312,772	5,145,905	2,277,554		
2211 Gasoline	4,573,716	432,024	1,164,366	2,862,744	114,582	4,573,716	432,024	1,164,366	2,862,744	114,582		
2212 Kerosene	438,702	0	104,077	332,613	2,012	438,702	0	104,077	332,613	2,012		
2330 Distillate Fuel Oil	3,872,066	369,926	1,162,492	1,716,846	622,802	3,872,066	369,926	1,162,492	1,716,846	622,802		
2340 Residual Fuel Oil	835,096	110,317	377,399	124,751	222,629	835,096	110,317	377,399	124,751	222,629		
2350 Lube Oil & Greases	653,621	575,341	24,687	25,872	27,721	653,621	575,341	24,687	25,872	27,721		
2410 Petro. Jelly & Waxes	47,723	0	0	0	47,723	47,723	0	0	0	47,723		
2429 Naphtha & Solvents	65,466	28,380	29,369	0	7,717	65,466	28,380	29,369	0	7,717		
2430 Asphalt, Tar & Pitch	1,105,307	429,554	144,646	30,105	501,002	1,105,307	429,554	144,646	30,105	501,002		
2540 Petroleum Coke	1,398,070	454,206	193,630	37,293	712,941	1,398,070	454,206	193,630	37,293	712,941		
2640 Hydrocarbon & Petrol Gases, Liquefied and Gaseous	142,575	0	112,106	15,681	14,788	142,575	0	112,106	15,681	14,788		
2990 Petro. Products NEC	3,637	0	0	0	3,637	3,637	0	0	0	3,637		
Total Chemicals and Related Products	9,808,359	5,318,321	640,039	302,519	3,547,480	9,808,359	5,318,321	640,039	302,519	3,547,480		
Subtotal Fertilizers	2,707,685	1,898,644	256,564	47,395	505,082	2,707,685	1,898,644	256,564	47,395	505,082		
3110 Nitrogenous Fert.	1,648,329	1,296,982	45,725	3,130	302,492	1,648,329	1,296,982	45,725	3,130	302,492		
3120 Phosphatic Fert.	31,553	13,079	0	1,464	17,010	31,553	13,079	0	1,464	17,010		
3130 Potassic Fert.	556,911	221,839	205,481	41,376	88,215	556,911	221,839	205,481	41,376	88,215		
3190 Fert. & Mixes NEC	470,892	366,744	5,358	1,425	97,365	470,892	366,744	5,358	1,425	97,365		
Subtotal Other Chemicals and Related Products	7,100,674	3,419,677	383,475	255,124	3,042,398	7,100,674	3,419,677	383,475	255,124	3,042,398		

Potential to save over \$2M annually

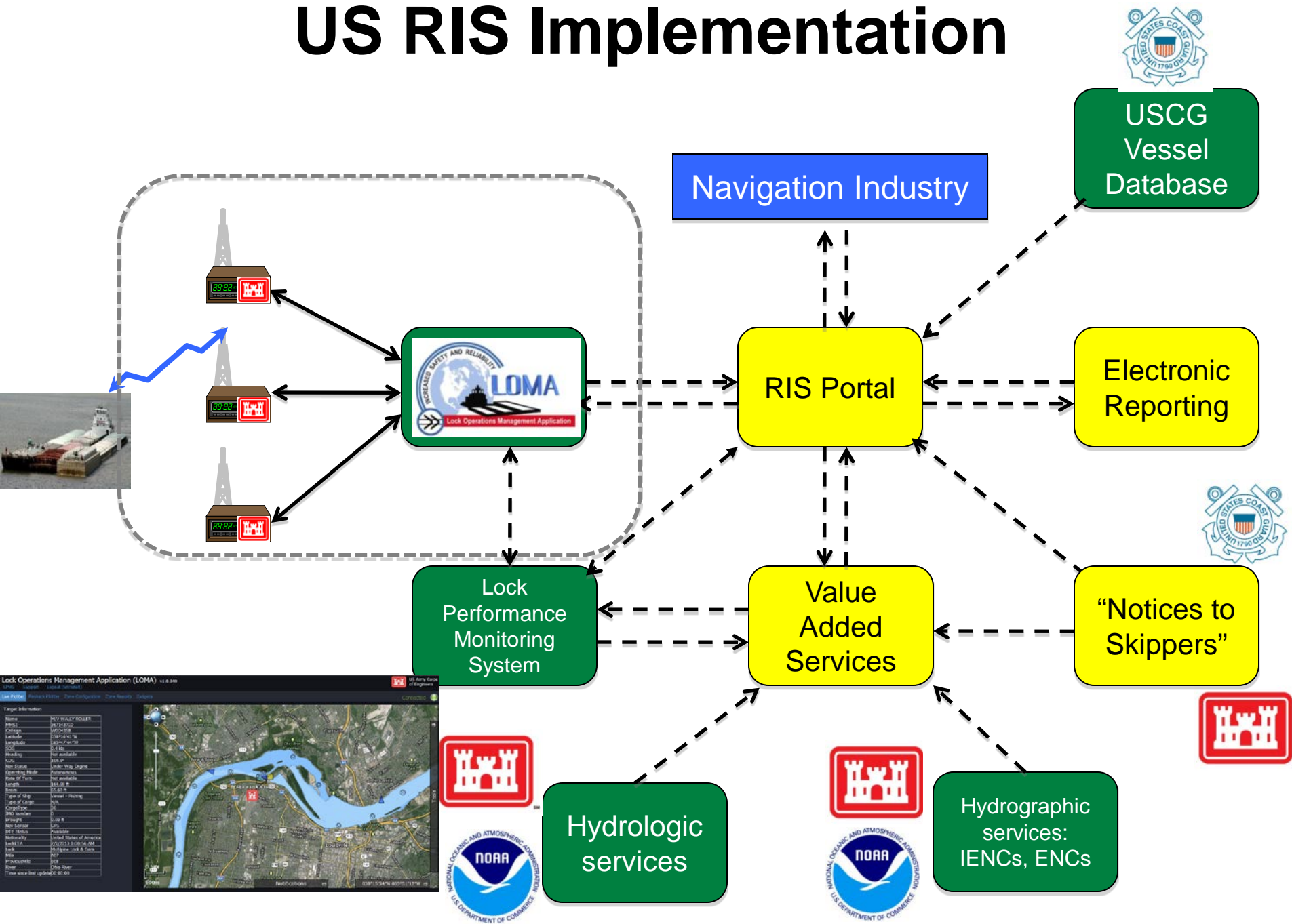


USACE Vision & Implementation

- Improve waterway operations and reliability
 - ▶ Reduce collisions
 - ▶ Provide situational awareness
 - ▶ Communicate with the Mariner
 - ▶ Better understand the MTS



US RIS Implementation



Challenge

We need a National vision and mechanism to implement

