

The pandemic from a New Zealand perspective.

Associate Professor Siouxsie Wiles
University of Auckland, New Zealand

 @SiouxsieW

Daily new confirmed COVID-19 cases

Shown is the rolling 7-day average. The number of confirmed cases is lower than the number of actual cases; the main reason for that is limited testing.

Our World
in Data

LINEAR

LOG

+ Add country



Source: Johns Hopkins University CSSE COVID-19 Data

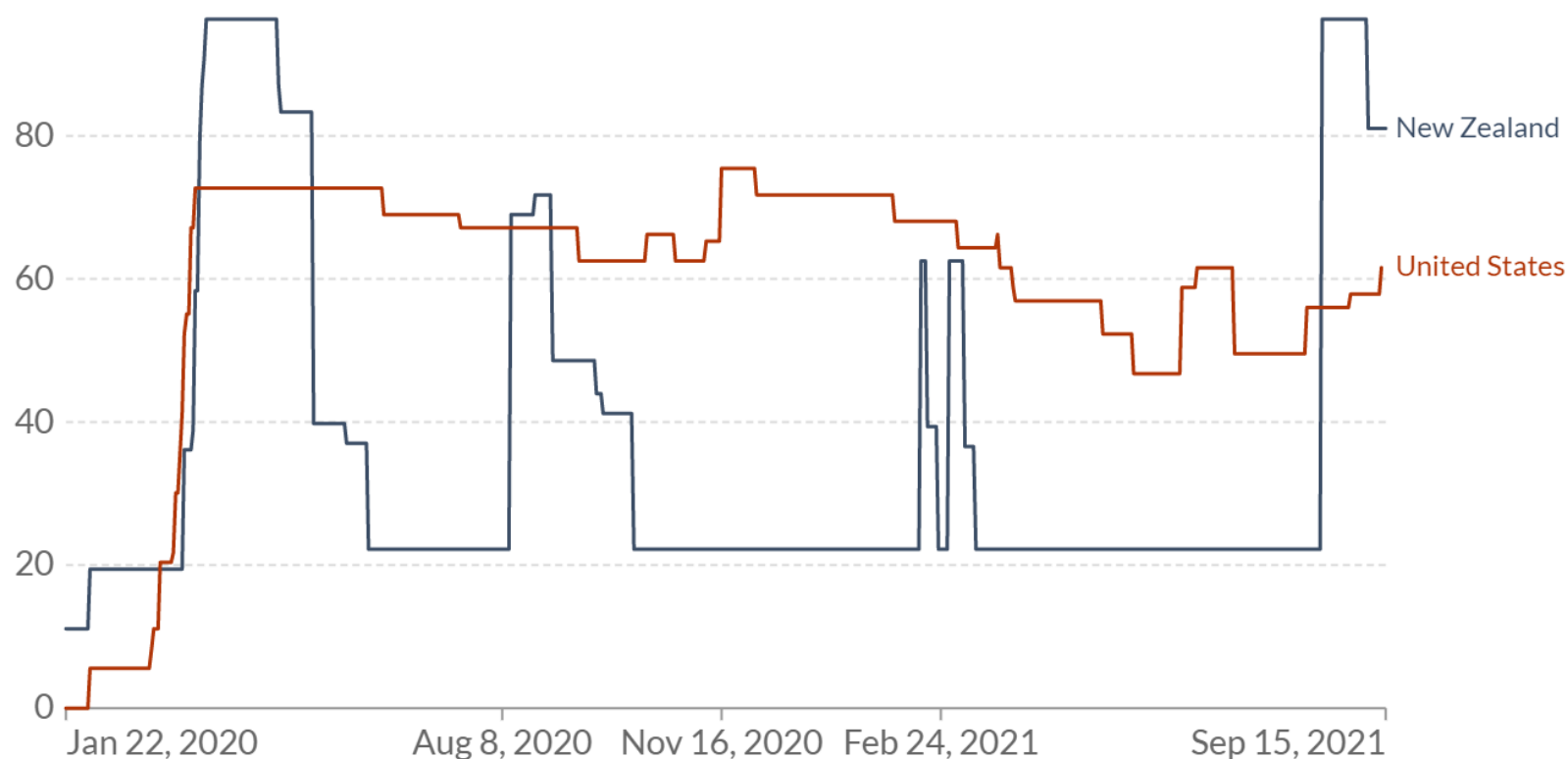
CC BY

COVID-19: Stringency Index

Our World
in Data

This is a composite measure based on nine response indicators including school closures, workplace closures, and travel bans, rescaled to a value from 0 to 100 (100 = strictest). If policies vary at the subnational level, the index is shown as the response level of the strictest sub-region.

[+ Add country](#)



Source: Oxford COVID-19 Government Response Tracker, Blavatnik School of Government, University of Oxford – Last updated 20 September 2021, 03:50 (London time)
OurWorldInData.org/coronavirus • CC BY

A human response to a health crisis

The world's best COVID-19 response

Bloomberg

The most intelligently and sensitively
designed public information
programme in this pandemic

Wallpaper*

Unite against COVID-19

Clear communication was the hallmark
of New Zealand's response



World Health
Organization

A modern masterpiece
of mass communication

THE **SPINOFF**



Created a consistent source of truth

Encouraged connection and hope

Interpreted complex changes

Introduced new social norms

Established daily routines

Gave ownership of an idea

Helped us mourn together

We weren't prepared

2019, NZ ranks 35th for pandemic preparedness. A large-scale outbreak would cripple our health system. Public compliance of government messaging was below 50%.

We needed a collective response

Unite Against COVID-19 galvanised Kiwis around a central idea – one we could all rally behind, take pride in and own. An integrated platform of beauty, hope, humour and heart, every touchpoint reinforced our individual role in achieving our collective purpose. With clarity, humanity and sensitivity.

We overcame

No pandemic response has been so loved and cherished by its people, provoking pride, trust and action. Unite Against has become ingrained within Kiwi culture, won global hearts and praise, and become the text-book response to a health crisis. Aotearoa's continued freedom and countless lives saved are testament to how we all rallied behind Unite Against.

97%

Campaign Awareness

86%

Understanding of Alert Levels

88%

Trust in Govt. Information

OECD

Lowest Death Rate

New Zealand Government



1pm Daily Update

TV Series · 2020–

Episode guide 24 >

Cast & crew ·



News

Reality-TV

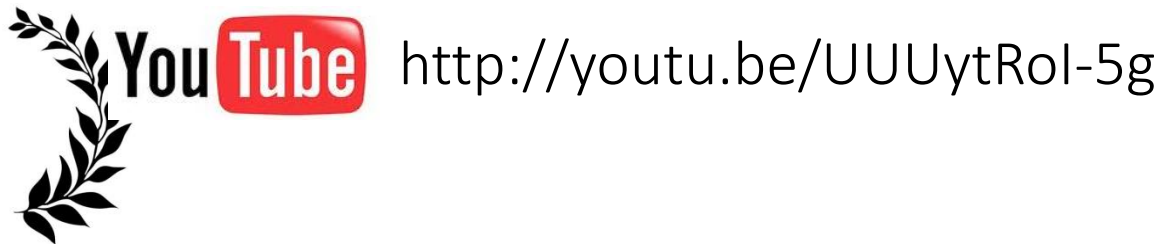
Set in a dystopian world where autocratic and populist leaders are in charge of the USA, China, UK, Brazil and many other nations. 1pm Daily Update takes place in the imaginary island nation of New Zealand, a utopian society where science, facts, strong leadership and a genuine care for its people and environment take precedence over money and big business.

Stars [The Team of 5 Million](#) · [Ashley Bloomfield](#) · [Jacinda Ardern](#) >

IMDbPro See production, box office & company info [🔗](#)



Scientist-communicator



THE SPINOFF

SOCIETY

MAR 3, 2020



Covid-19 and kids: How to talk to children about the coronavirus

People have started asking me how they should talk to kids about the disease. So, here are some handy tips.

[Read on.](#)

SCIENCE

MAR 2, 2020

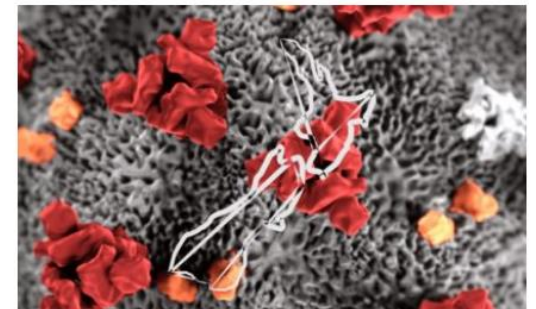


Covid-19: How do you contract the coronavirus, and who is most at risk?

A new report on the Covid-19 outbreak has some important insights into the way it has progressed, and underscores why we should take it seriously.

SCIENCE

FEB 28, 2020



A practical guide to dealing with the arrival of the coronavirus in New Zealand

Do not panic. But do prepare. Here's what you need to do.

[Read on.](#)

Calm

Transparent

Accessible

Explain the evidence

Show my values

Not stigmatise

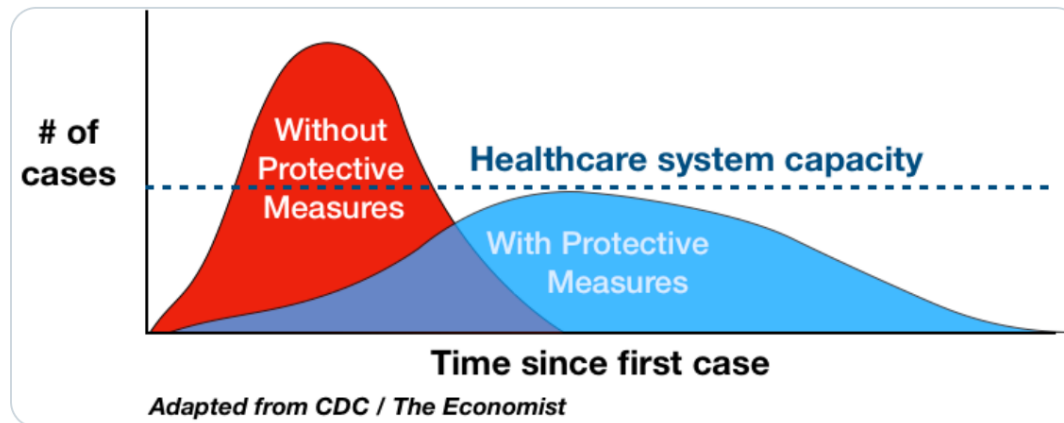


Drew A. Harris, DPM, MPH

@drewaharris

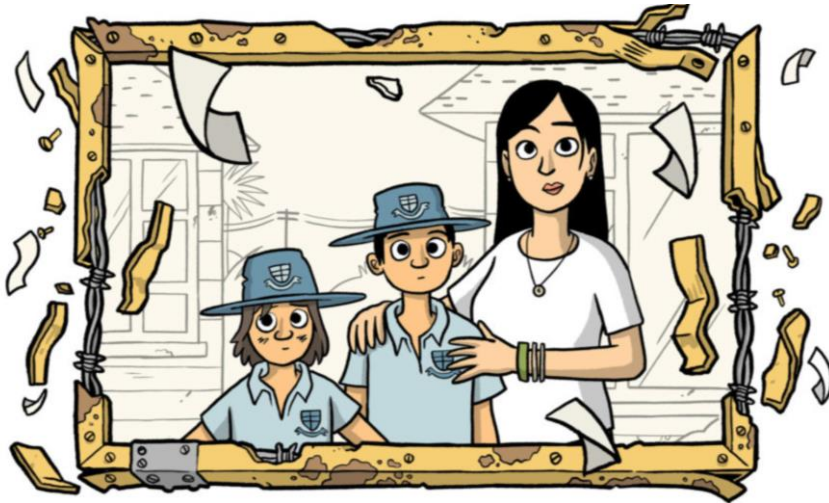
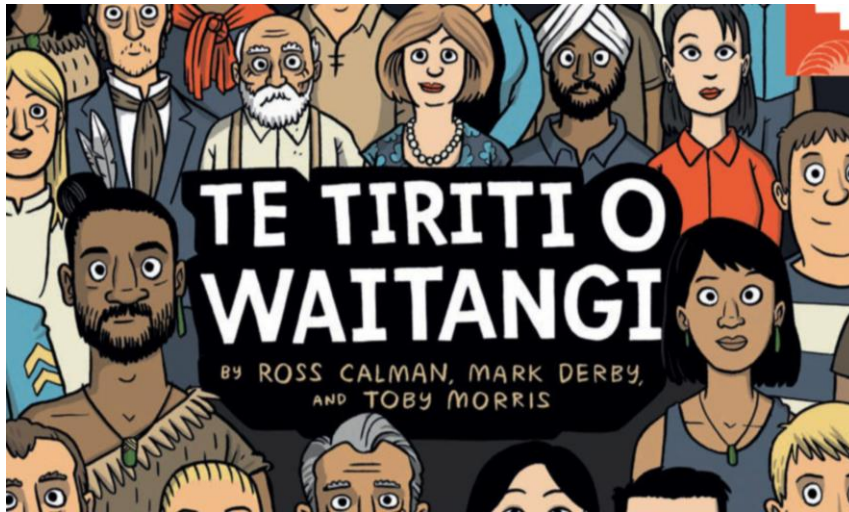


Important to remember that #Covid-19 epidemic control measures may only delay cases, not prevent. However, this helps limit surge and gives hospitals time to prepare and manage. It's the difference between finding an ICU bed & ventilator or being treated in the parking lot tent.



6:47 PM · Feb 28, 2020 · [Hootsuite Inc.](#)

1.2K Retweets **1.6K** Likes



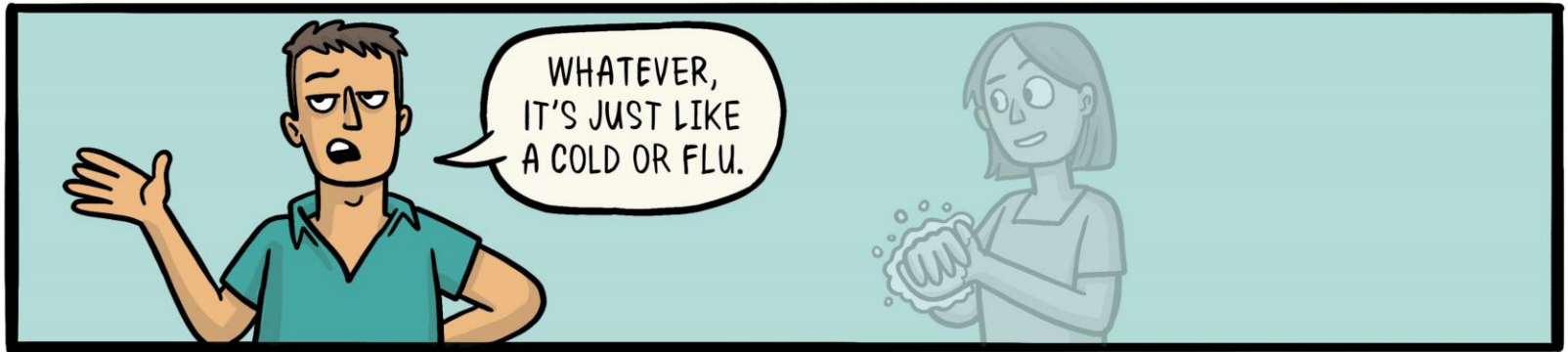
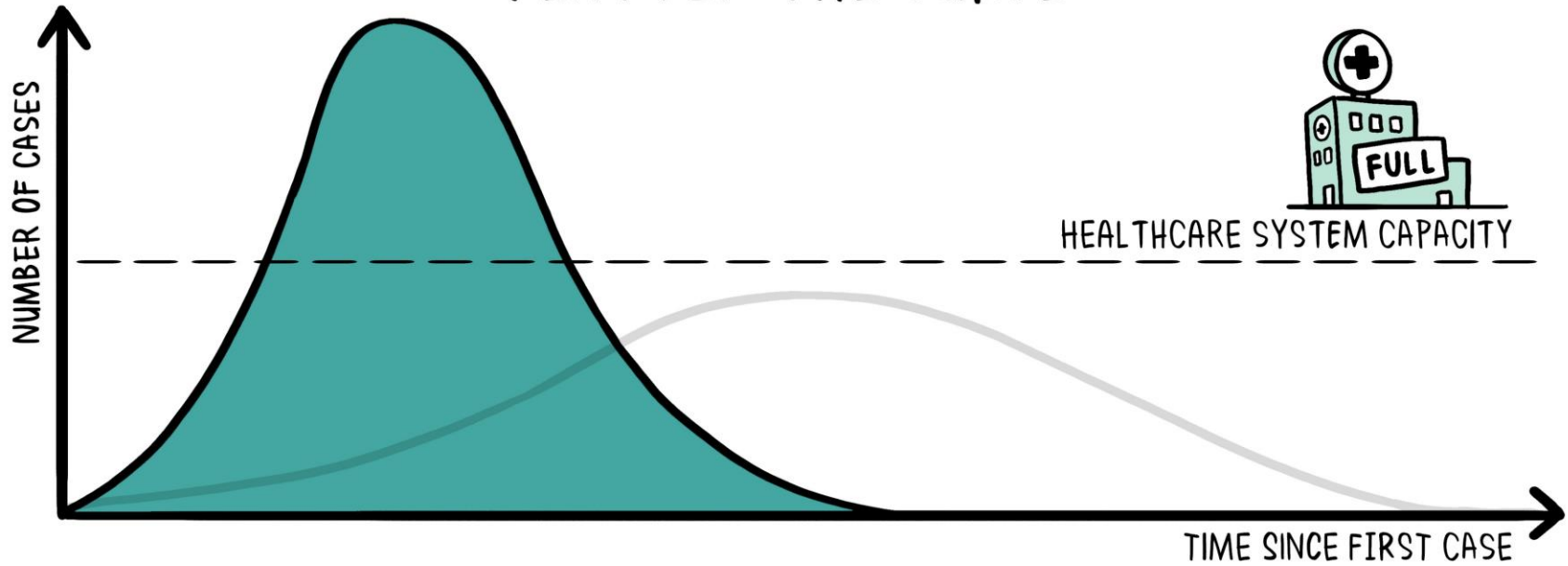
Fairer Future: Fixing Poverty in Aotearoa



Toby Morris
(@XTOTL)

9th March

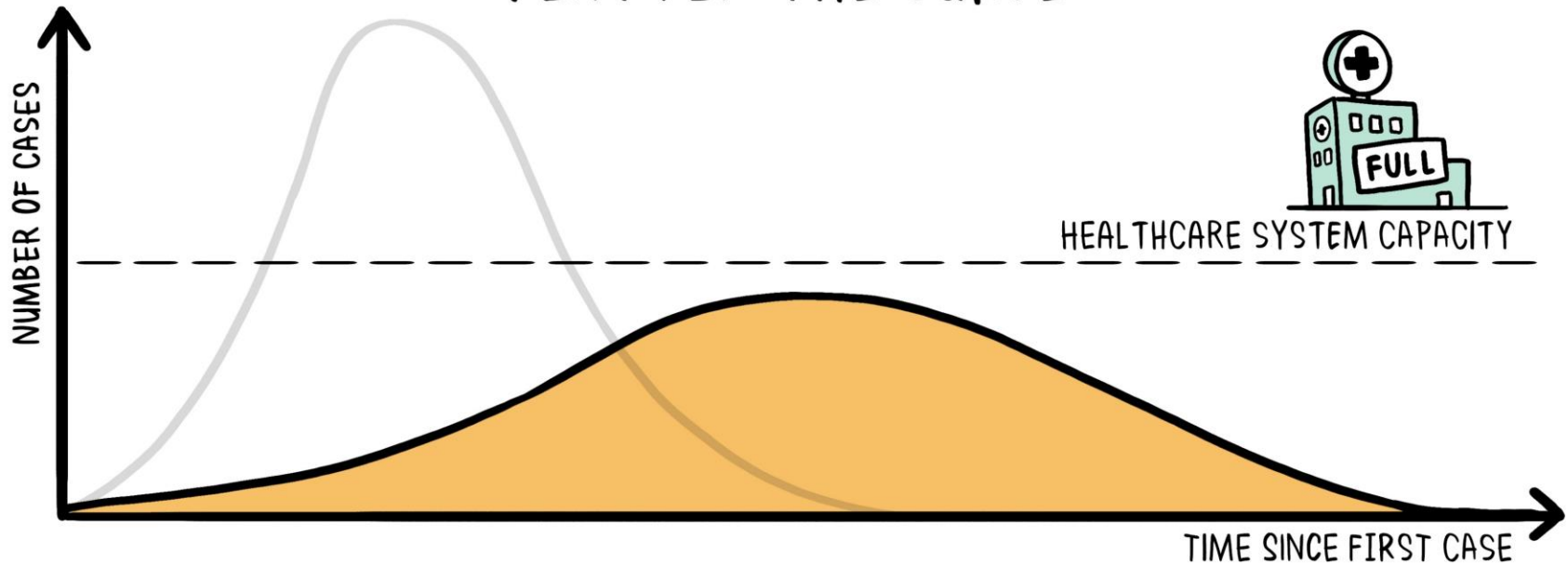
FLATTEN THE CURVE



@SIOUXSIEW @XTOTL @THESPINOFFTV

'ADAPTED FROM @DREWAHARRIS, THOMAS SPLETTSTÖBER (@SPLETTE) AND THE CDC'
CC-BY-SA

FLATTEN THE CURVE



HEALTH 03/11/2020 03:18 pm ET | Updated Mar 15, 2020

Here's Why Everybody's Talking About 'Flattening The Curve'

The coronavirus is now officially a pandemic. It's going to require everybody's help to control its impact.

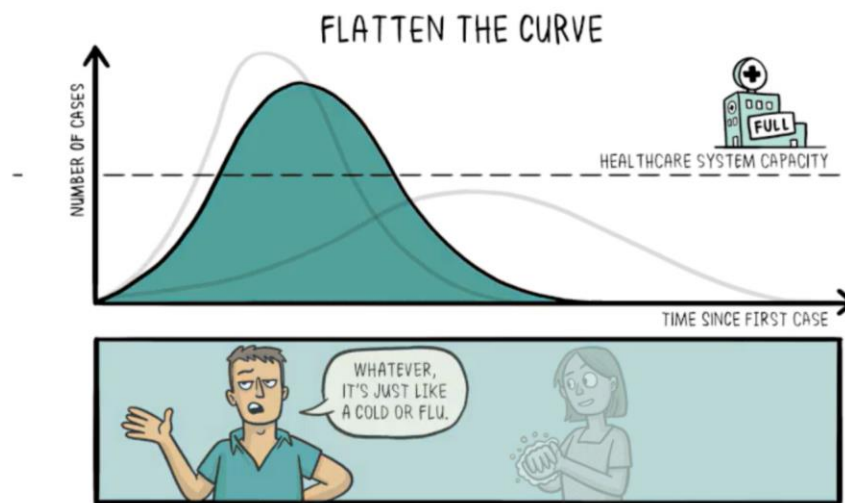
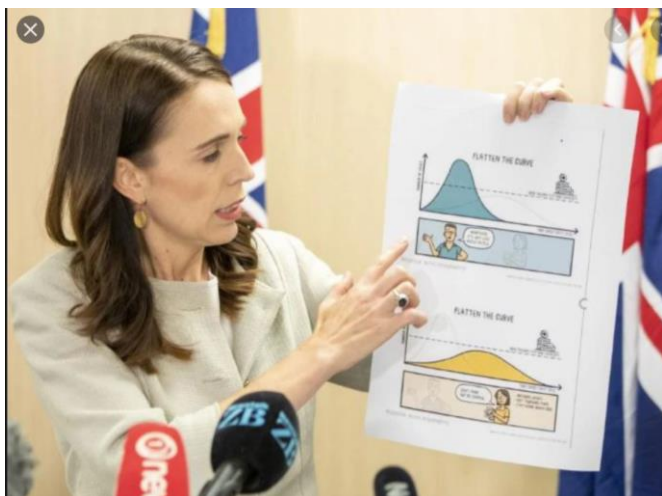


By Sara Boboltz

Now that coronavirus cases in the U.S. have [ticked up to four figures](#), the big question is how many people may ultimately become infected and how quickly it will happen.

With everyone wondering the same thing, there's a phrase you might have seen in a hashtag: Flatten the curve.

The curve, in this context, is simply the number of people who contract COVID-19, the disease caused by the new coronavirus, over time. It's easiest to understand if you see it drawn out:



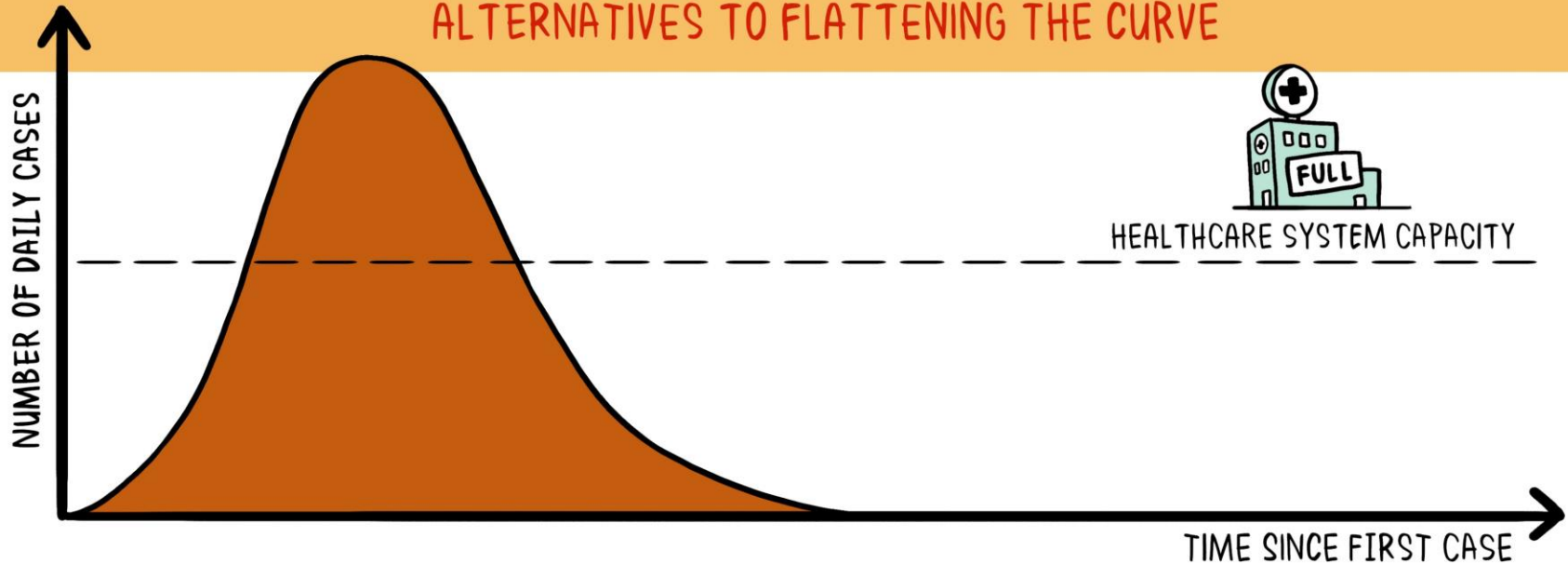
@SIOUXSIEW @XTOTL @THESPINOFFTV

 ADAPTED FROM @DREWAHARRIS, THOMAS SPLETTSTÖBER (@SPLETTE) AND THE CDC
CC-BY-SA

14th March

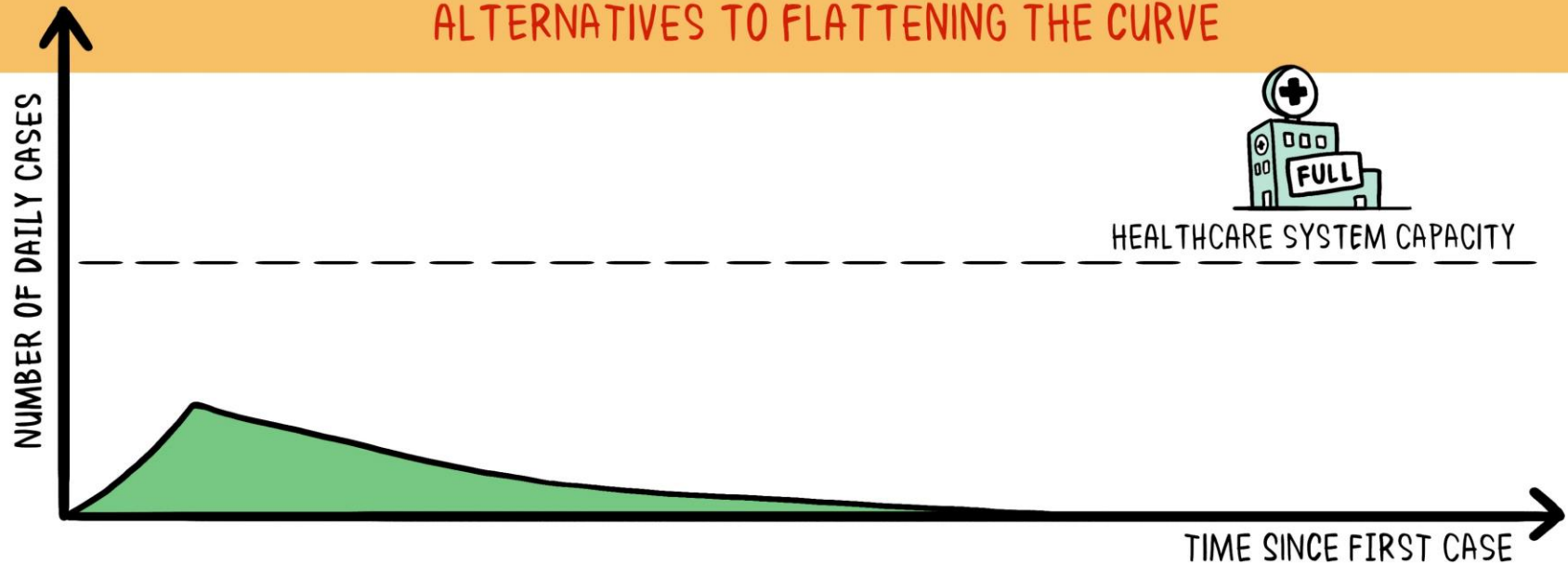
STOP THE SPREAD

ALTERNATIVES TO FLATTENING THE CURVE



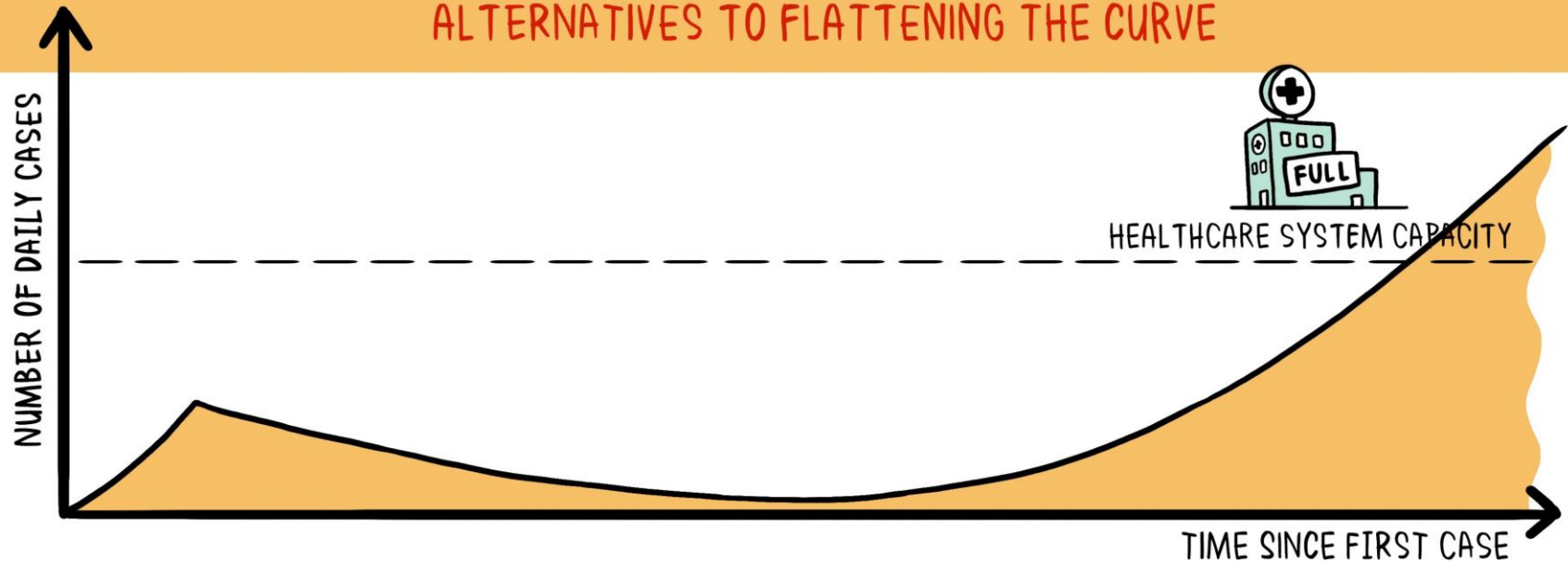
STOP THE SPREAD

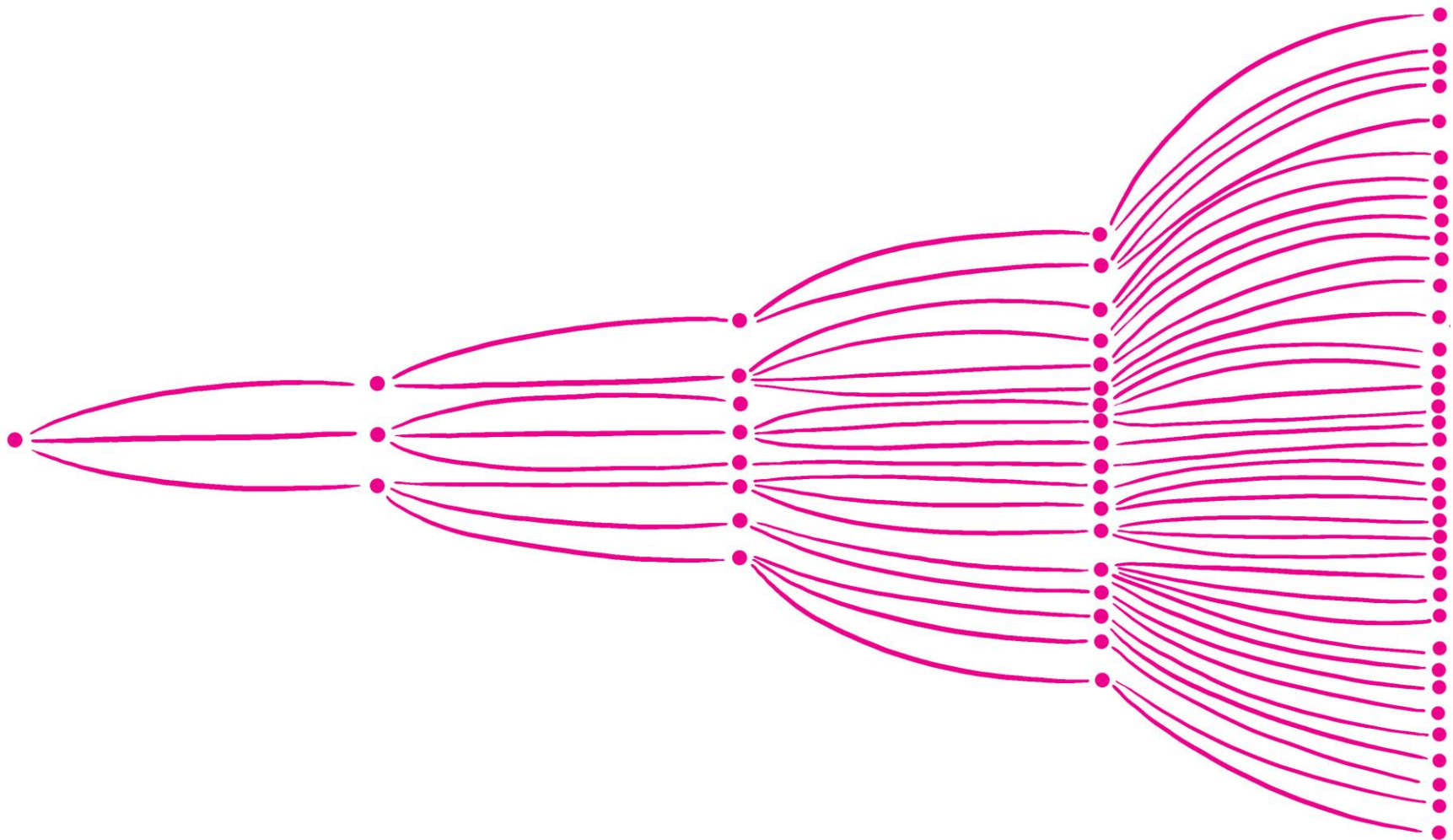
ALTERNATIVES TO FLATTENING THE CURVE

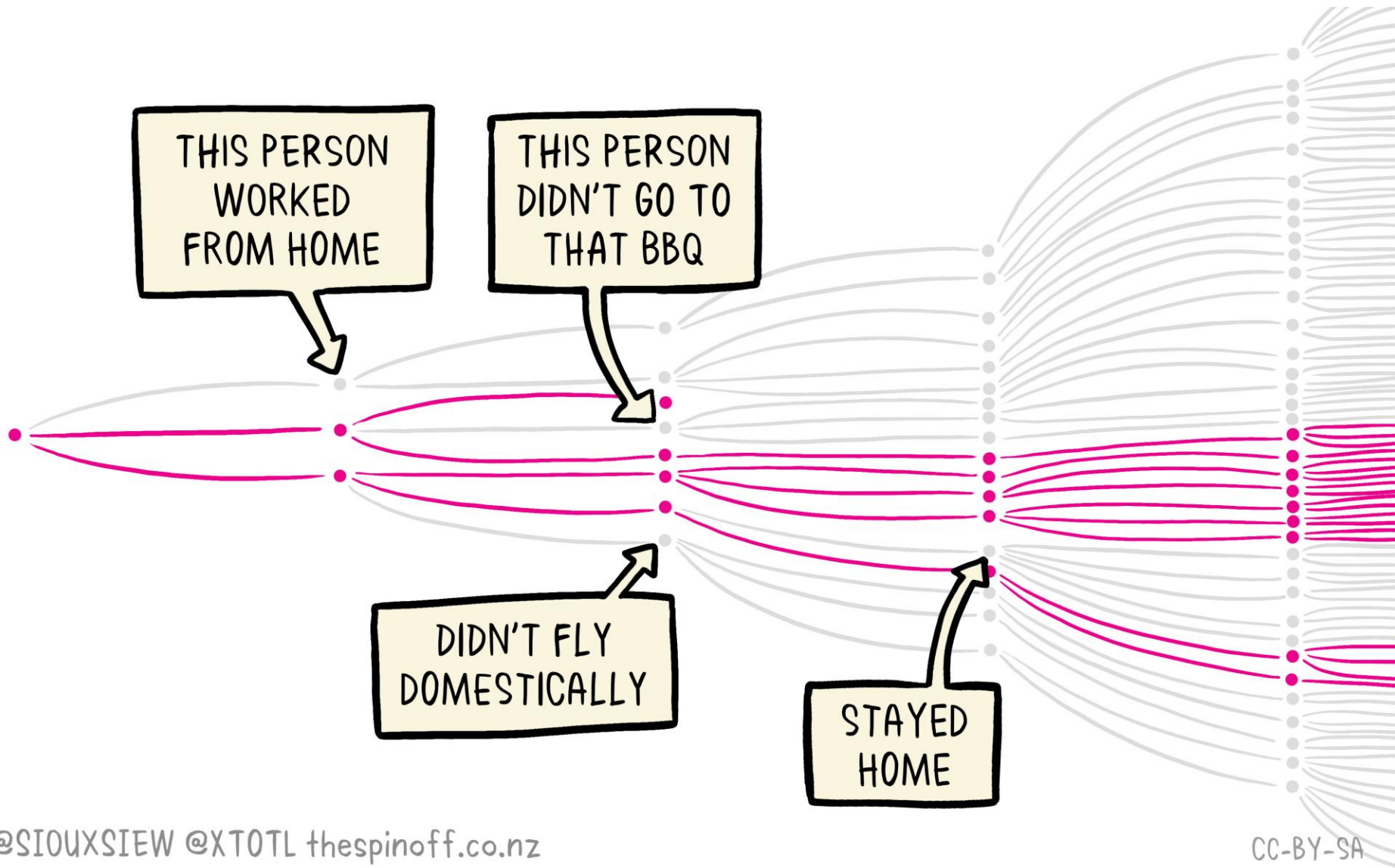


STOP THE SPREAD

ALTERNATIVES TO FLATTENING THE CURVE







CREATIVE COMMONS LICENSES



COPY
& PUBLISH



ATTRIBUTION
REQUIRED



COMMERCIAL
USE



MODIFY
& ADAPT



CHANGE
LICENSE



PUBLIC DOMAIN



CC BY



CC BY-SA



CC BY-ND



CC BY-NC



CC BY-NC-SA



CC BY-NC-ND



You can redistribute
(copy, publish, display,
communicate, etc.)



You have to attribute
the original work



You can use the work
commercially



You can modify and
adapt the original work



You can choose license
type for your adaptations
of the work.



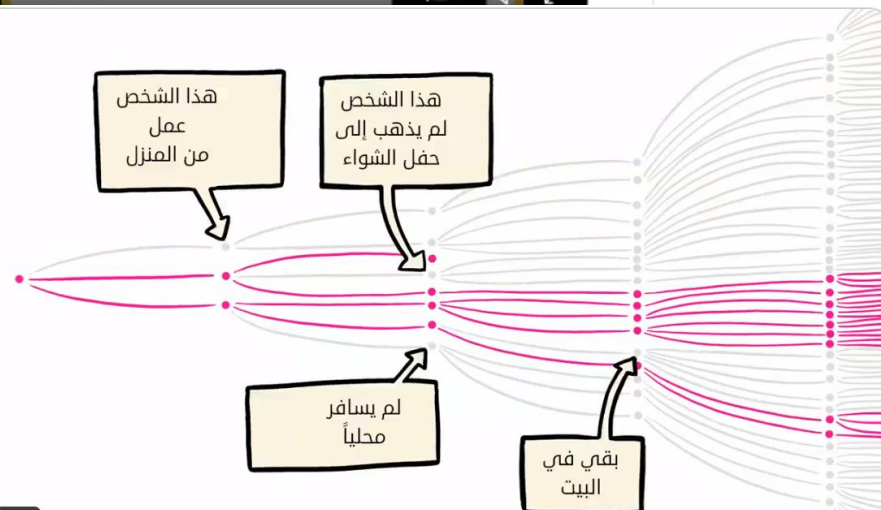
Australian Government Department of Health @health... · Mar 25
Your actions will save lives. This is why it's important to stay home:



BMG @BMG_Bund

Dieses Video verdeutlicht, die Wirksamkeit von #WirBleibenZuhause 🇩🇪. Durch die Einhaltung der Verhaltensregeln kann jeder und jede einen Beitrag dazu leisten, die Ausbreitung des #Coronavirus zu verlangsamen.

[Translate Tweet](#)

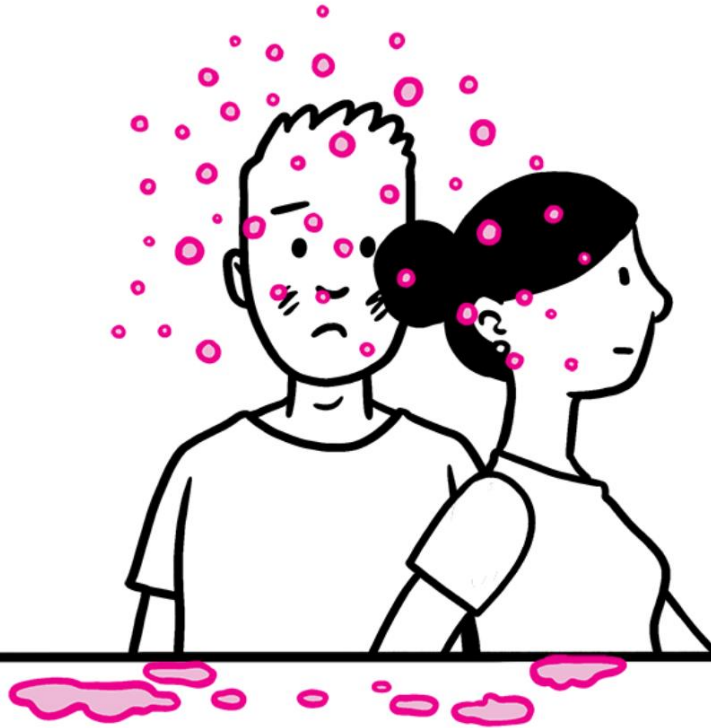


GIF

UUXSIEW @XTOTL thespino-off.co.nz translation automation by @MARCSTUTTER CC-BY-SA



COVID-19 TRANSMISSION 101

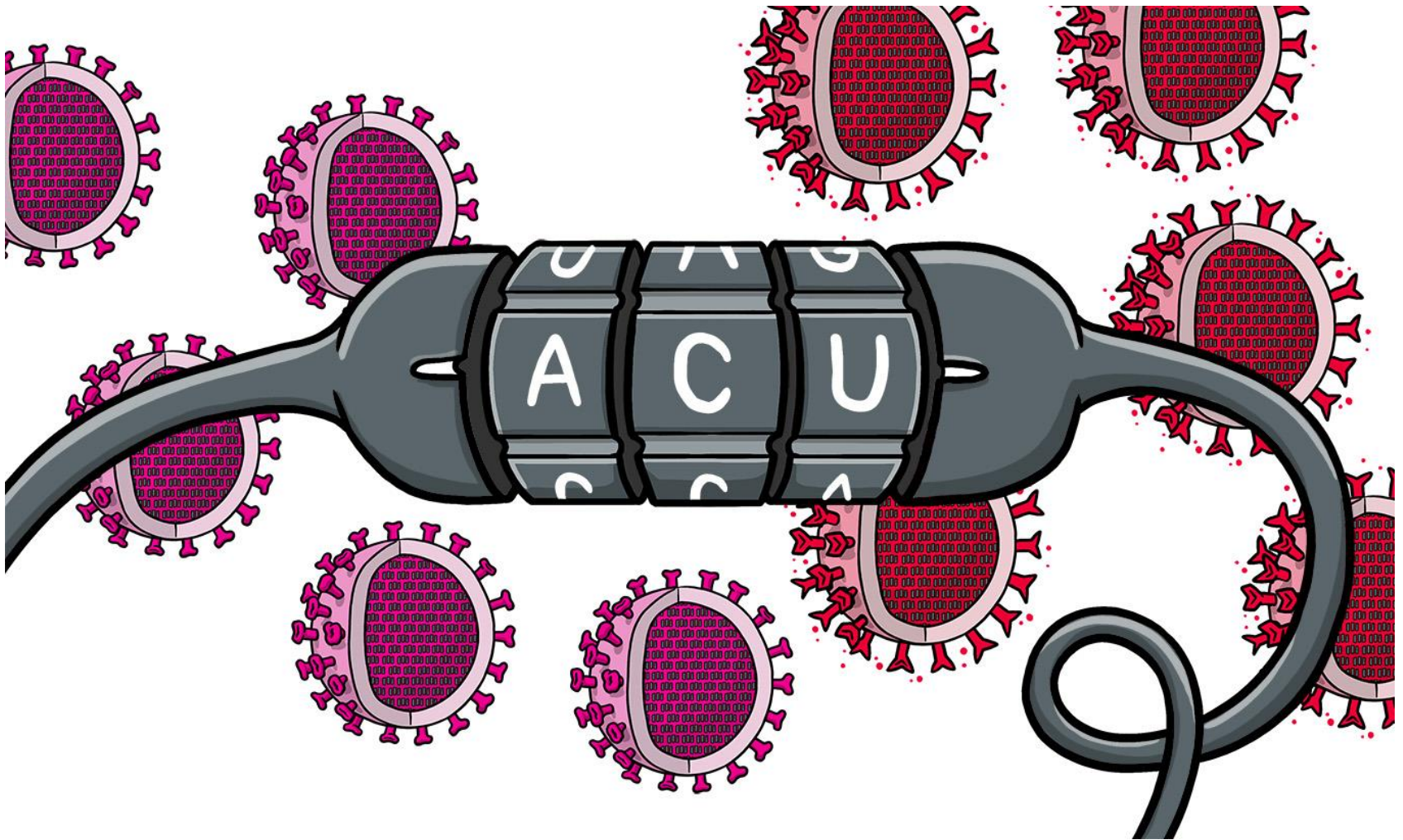


@SIOUXSIEW @XTOTL thespinoff.co.nz

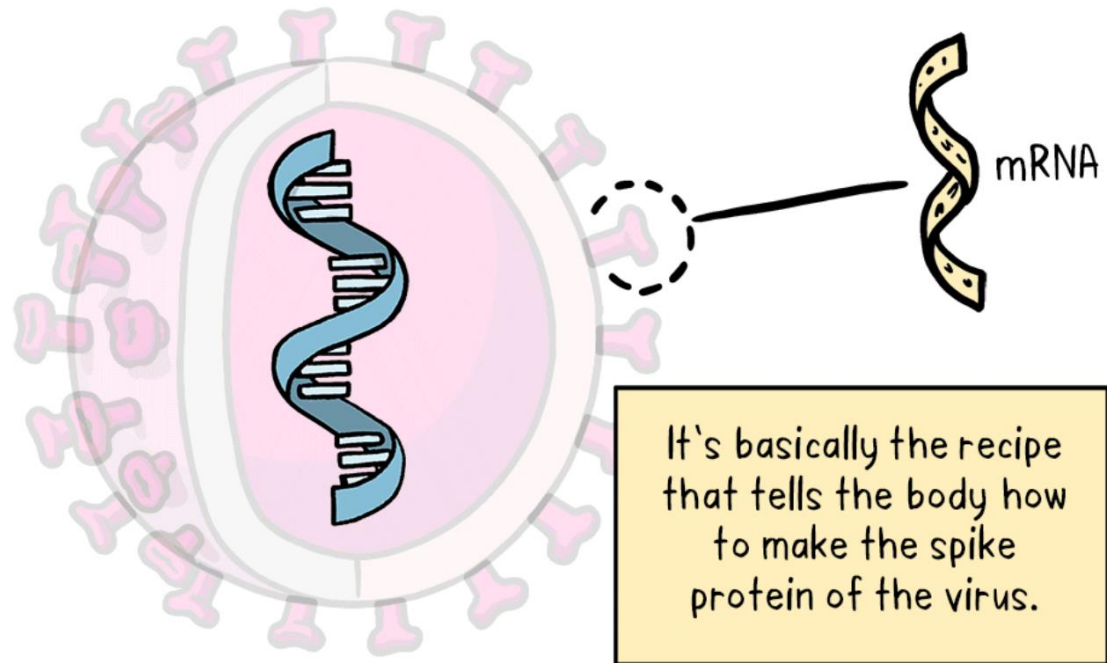
*INFORMATION MAY CHANGE AS NEW VARIANTS EVOLVE

CC-BY-SA 4.0

4 FEB 2021



THE PFIZER/BIONTECH COVID-19 VACCINE EXPLAINED

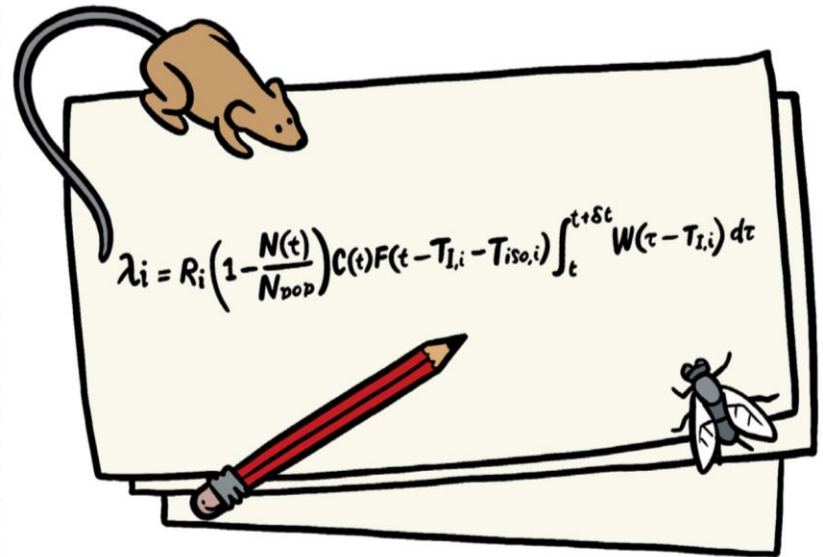


IT USUALLY MEANS...



a small replica, or a person who demonstrates clothes

BUT SCIENTISTS MEAN...



a simulation or representation of the real world

MISINFORMATION



DISINFORMATION



Independent of government

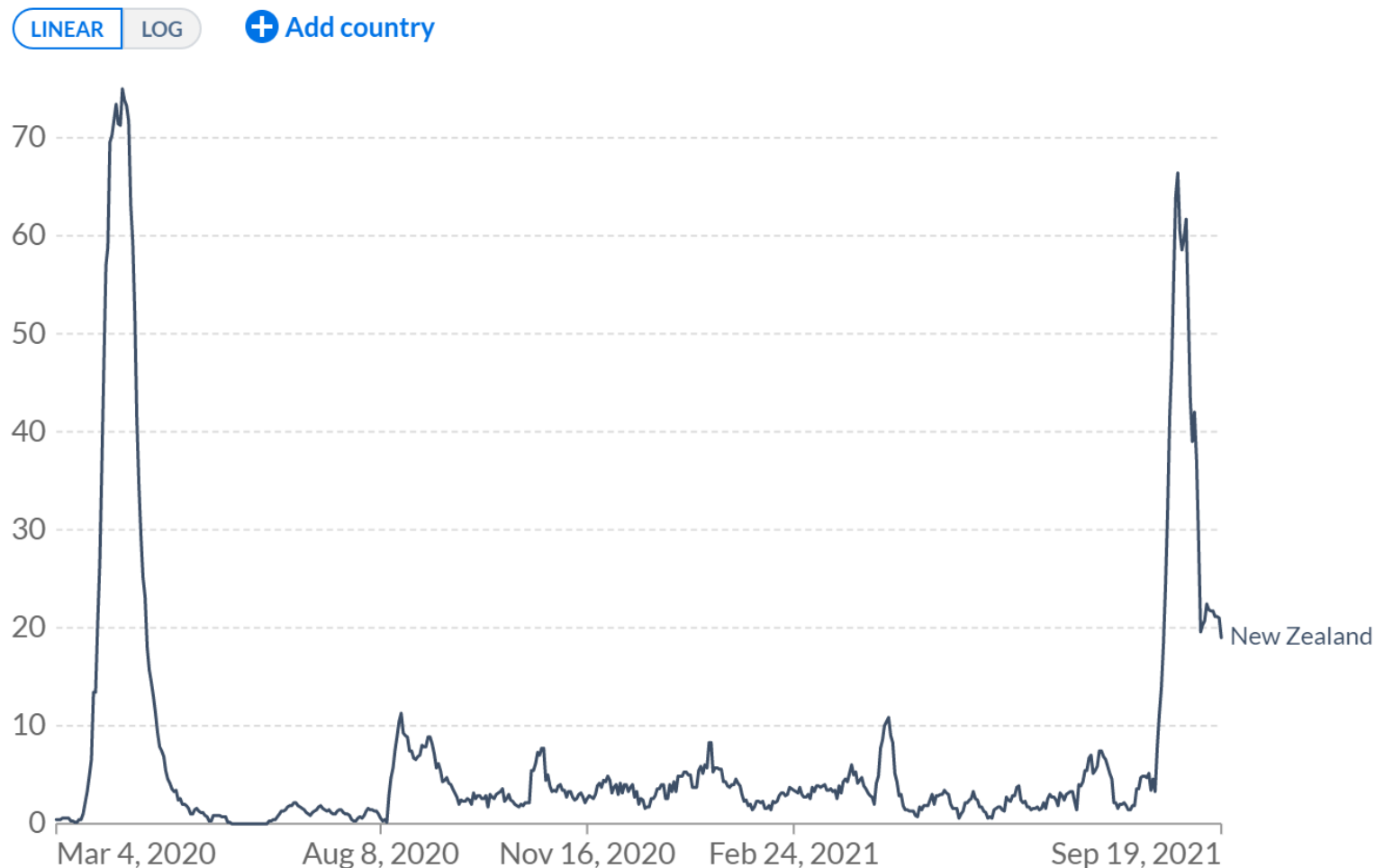
Provide information in bitesize,
understandable pieces

Make it engaging and sharable



Daily new confirmed COVID-19 cases

Shown is the rolling 7-day average. The number of confirmed cases is lower than the number of actual cases; the main reason for that is limited testing.



Source: Johns Hopkins University CSSE COVID-19 Data

CC BY

A balanced response to COVID-19

Covid Plan B represents the point of view that Covid19 does not warrant the extreme 'elimination' and lockdown strategy of the NZ Government.

Covid Plan B started as a multi-disciplinary group of expert and passionate people set up in April 2020 to examine, argue and posit evidence and perspectives on how and why New Zealand should modify its

We said New Zealand's attempt in 2020-21 to eliminate Sars-Cov2 was unnecessary, and would cause more health, social and economic harm than the virus itself.

This is a record of our stand against the Government and medical advisors who tried to eliminate the virus using lockdowns and other social control measures, and then vaccines.

Ivermectin now a proven Covid treatment

📅 January 3, 2021



Amesh Adalja 
@AmeshAA



In this piece I'm interview about New Zealand's non-sustainable abstinence only approach to [#COVID19](#) which I think is and was the wrong way to approach what was always to be an endemic respiratory infection



US virus expert criticises NZ's Covid-19 approach as unsust...
Johns Hopkins University's infectious diseases expert Amesh Adalja said countries need to learn to live with the virus.
[tvnz.co.nz](https://www.tvnz.co.nz)

12:28 PM · Sep 13, 2021 · Twitter for iPhone

11 Retweets 6 Quote Tweets 55 Likes

Covid 19: If Auckland isn't in level 2 in two weeks, elimination will have all but failed

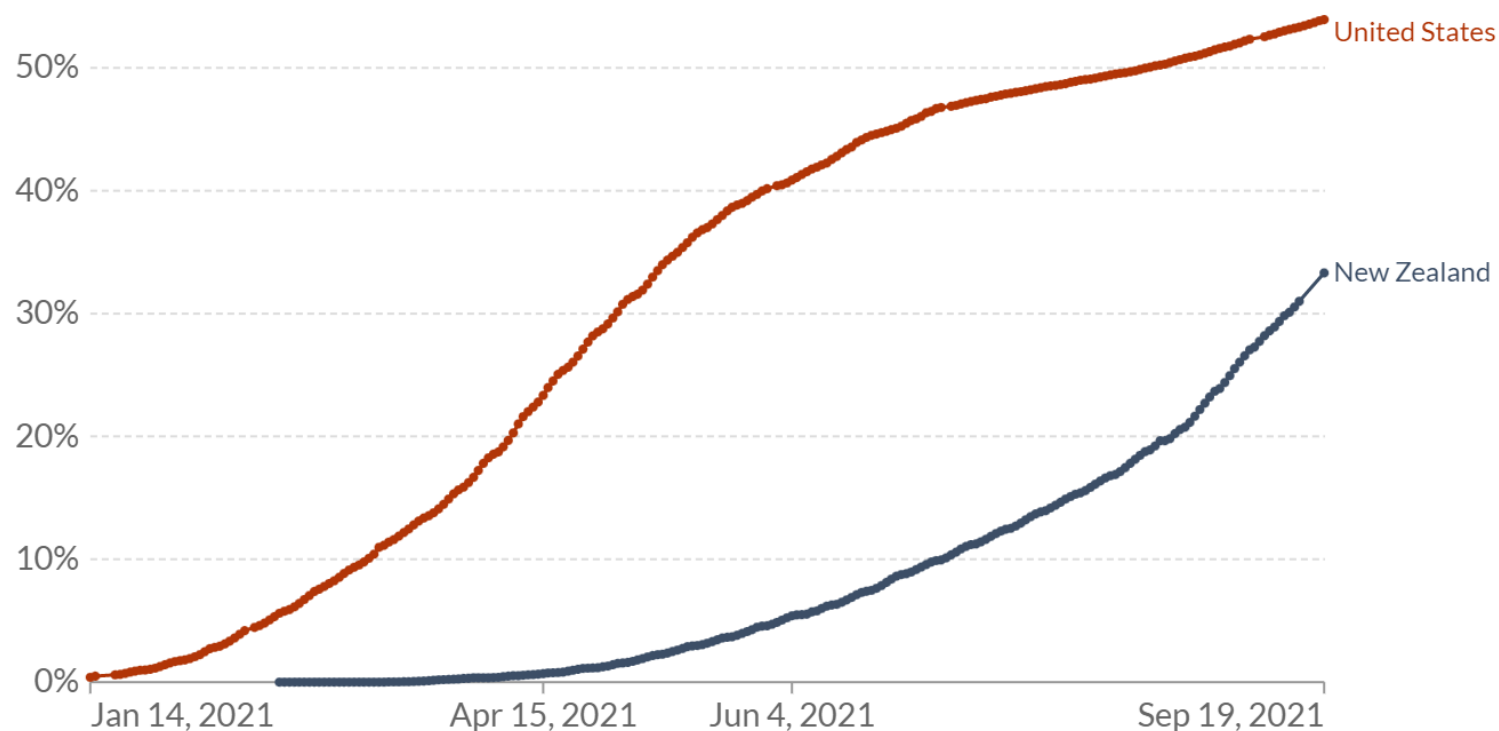
Luke Malpass · 06:10, Sep 21 2021



Share of the population fully vaccinated against COVID-19

Total number of people who received all doses prescribed by the vaccination protocol, divided by the total population of the country.

[+ Add country](#)



Source: Official data collated by Our World in Data - Last updated 20 September 2021, 18:00 (London time)

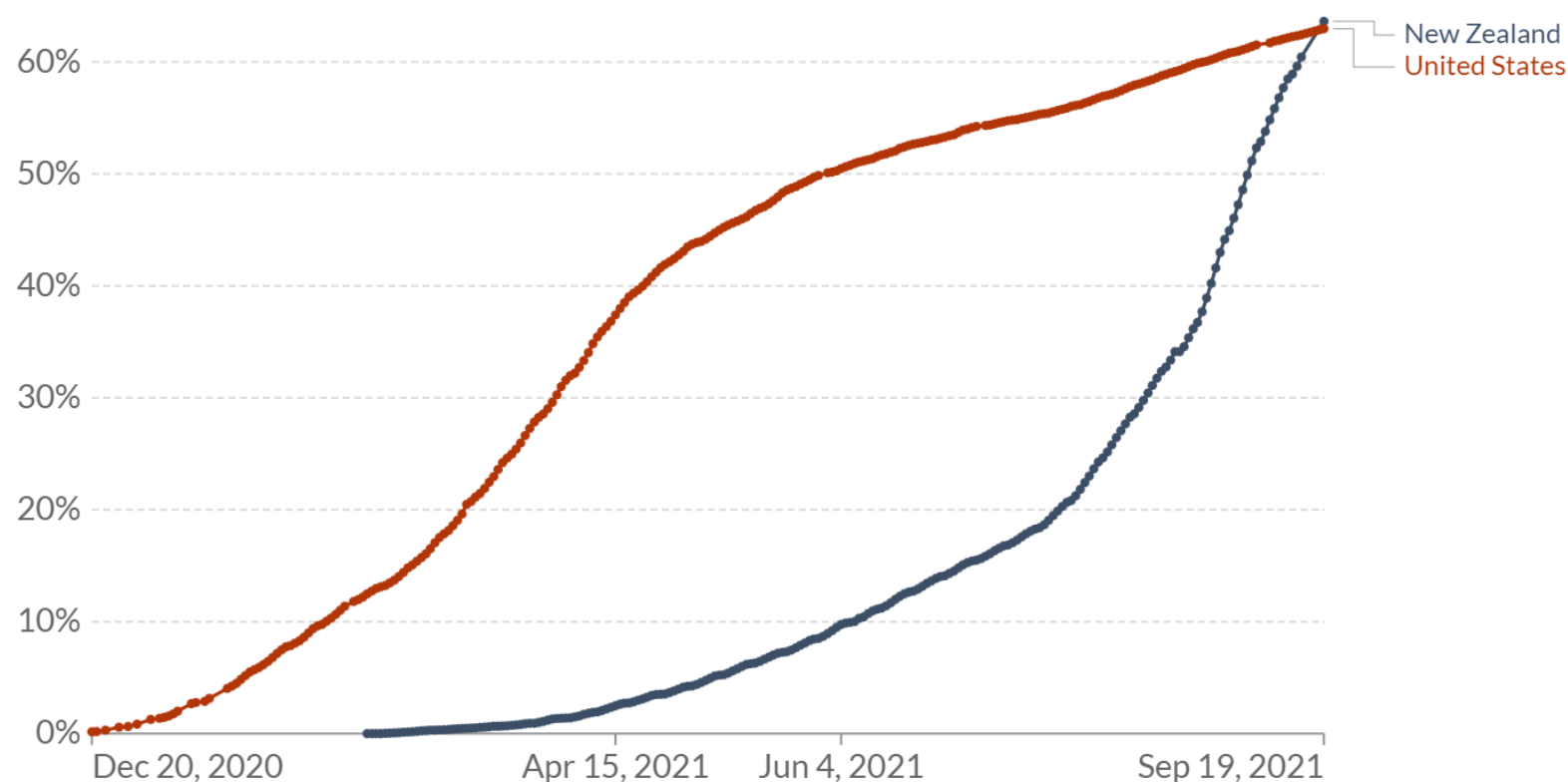
Note: Alternative definitions of a full vaccination, e.g. having been infected with SARS-CoV-2 and having 1 dose of a 2-dose protocol, are ignored to maximize comparability between countries.

OurWorldInData.org/coronavirus • CC BY

Share of people who received at least one dose of COVID-19 vaccine

Total number of people who received at least one vaccine dose, divided by the total population of the country.

[+ Add country](#)



Source: Official data collated by Our World in Data - Last updated 20 September 2021, 18:00 (London time)
OurWorldInData.org/coronavirus • CC BY





thespinoff.co.nz