

Frameworks for Age- and Dementia-Friendly Community Initiatives

Emily A. Greenfield, PhD (she/hers)

Aging in Place with Dementia, Session 1

Workshop Organized by the National Academies (NASEM)

September 13, 2023



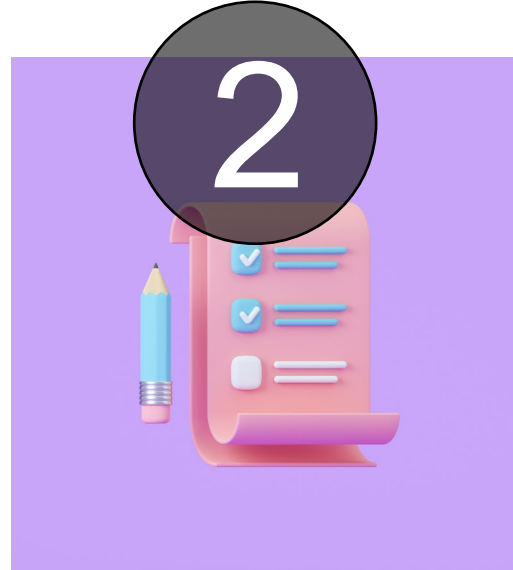
RUTGERS

School of Social Work
HUB FOR AGING COLLABORATION

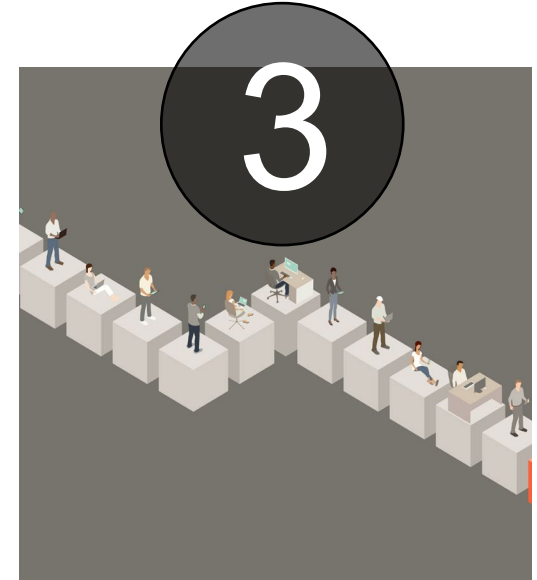
Three Parts



Theorizing communities as
a social unit for aging and
dementia



Advancing frameworks for
age- and dementia-friendly
community initiatives



Opportunities for research

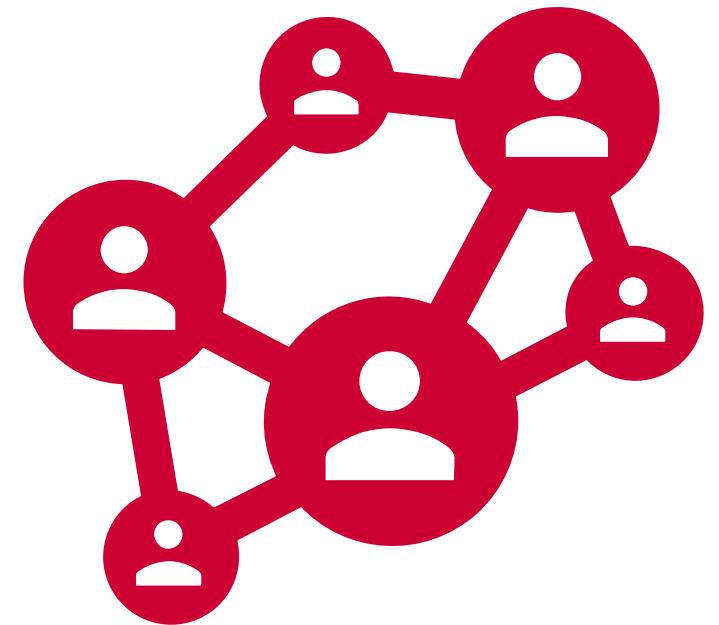
The background of the image is a dense, monochromatic pattern of interlocking paper gears. These gears, in various sizes, are cut from a light-colored material and arranged to create a complex, three-dimensional mechanical texture. The lighting highlights the sharp edges and the depth of the gear teeth, giving the entire surface a tactile, sculptural quality.

PART 1

Theorizing Communities as a Social Unit for Aging and Dementia

Communities as a Social Unit

- Connections across a set of people through some combination of “shared beliefs, circumstances, priorities, relationships, or concerns,” typically formalized through institutions, such as faith-based organizations and civic groups (Chaskin, 1997, p. 522)
- Common applications in the field of aging
 - Geographic (e.g., municipality, neighborhood)
 - Identity-based (e.g., LGBTQAI+, ethnic)
 - Organizational (e.g., senior center, residential housing)



Chaskin, R. J. (1997). Perspectives on neighborhood and community: a review of the literature. *Social Service Review*, 71(4), 521–547. <http://www.jstor.org/stable/30012640>

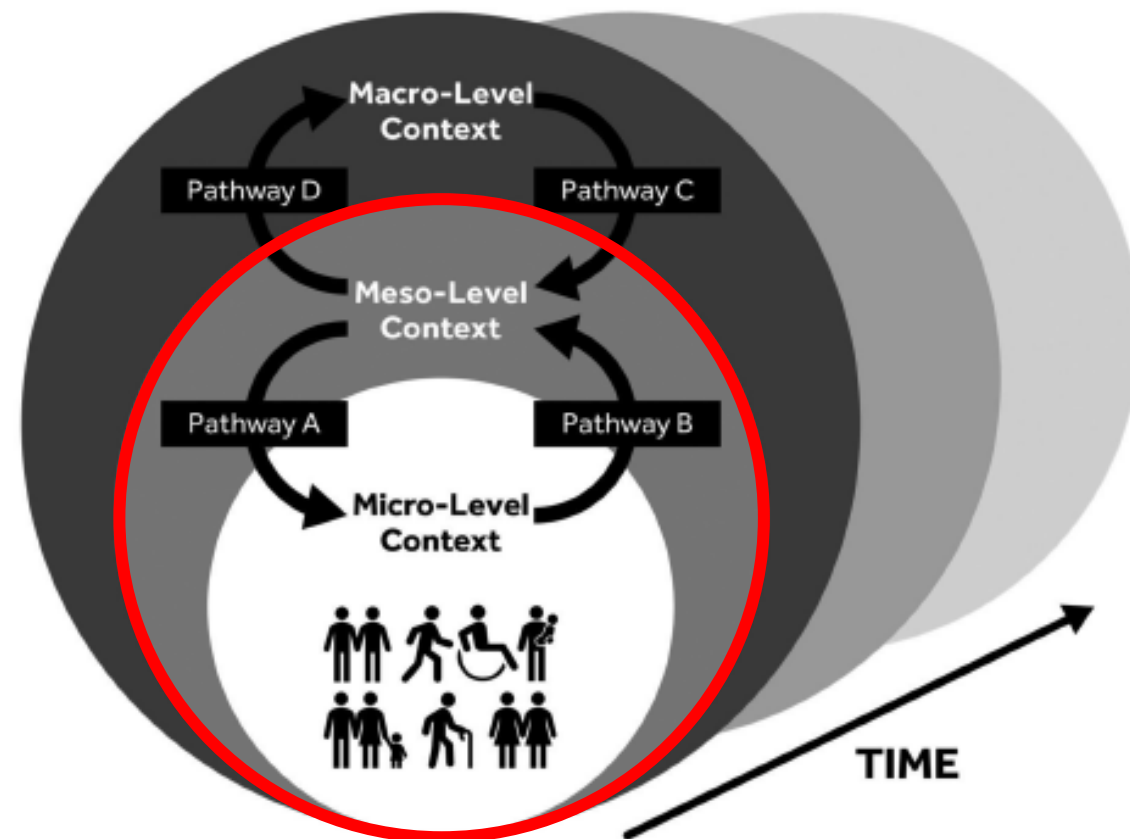
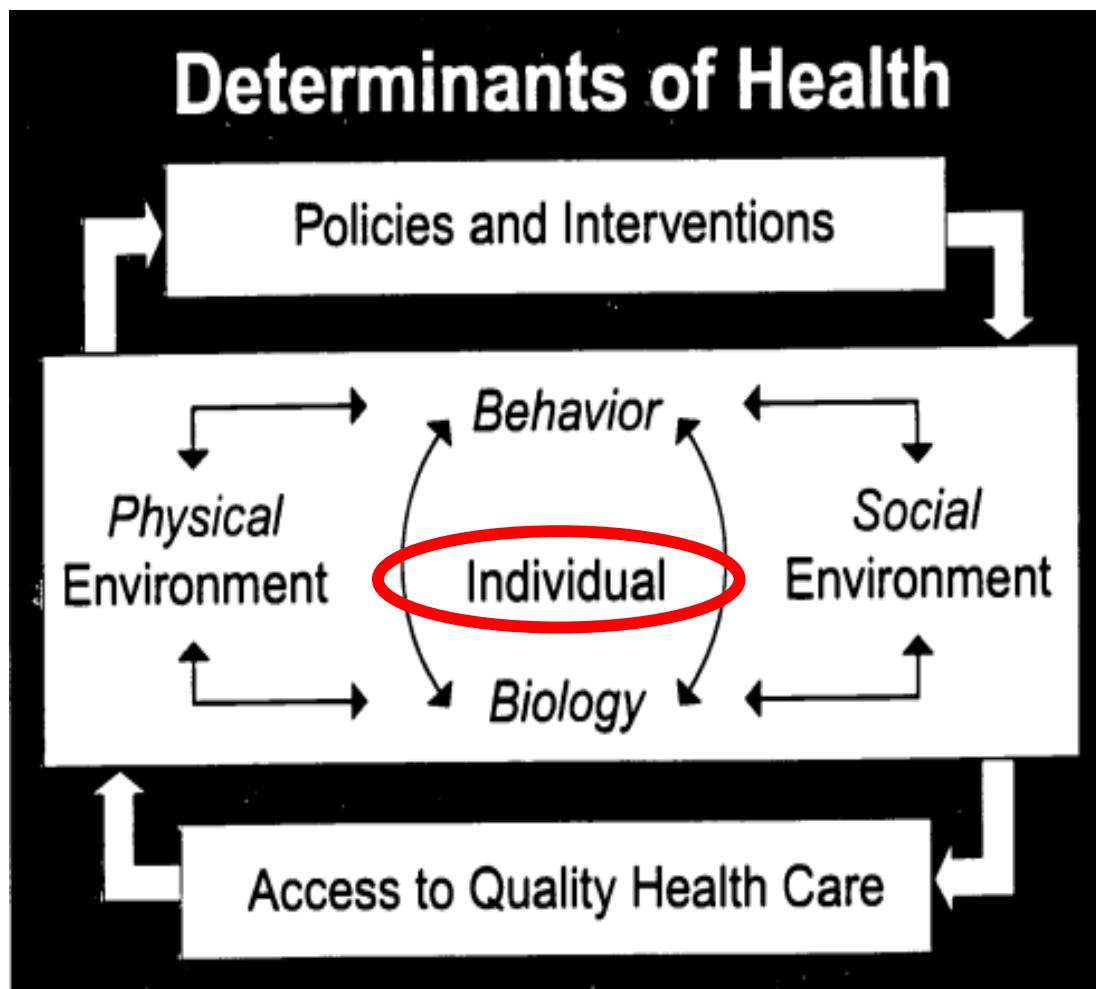


Figure 1. Pathways of mutual influence between the mesolevel of context with more micro and macro contexts over time.

Discourse on Communities and Aging



Community-Centered Approaches to Health and Aging

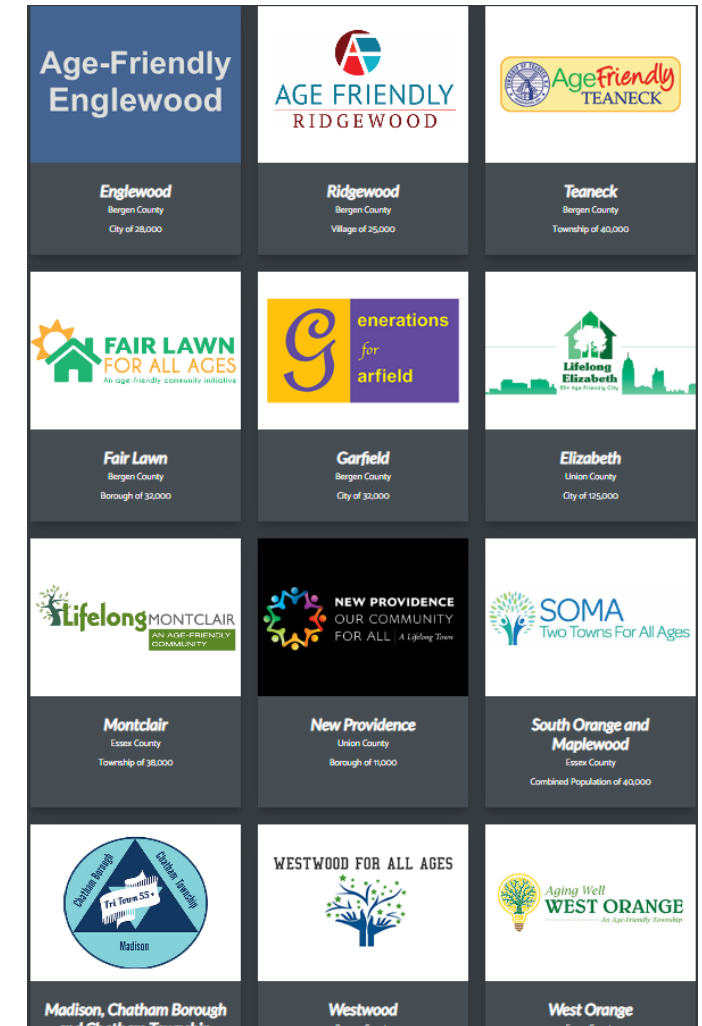
Communities as Both a Target and Engine for Change



Yasumoto, S., & Gondo, Y. (2021). CBSI as a social innovation to promote the health of older people in Japan. *International Journal of Environmental Research and Public Health*, 18, 4970. <https://doi.org/3390/ijerph18094970>

South, J. (2015). *A guide to community-centred approaches for health and wellbeing*. Public Health England. <https://eprints.leedsbeckett.ac.uk/id/eprint/1229/>

Examples in the U.S.



Published on 14.4.2022 in Vol 5, No 2 (2022): Apr-Jun

Preprints (earlier versions) of this paper are available at <https://preprints.jmir.org/preprint/34577>, first published November 02, 2021.



Naturally Occurring Retirement Communities: Scoping Review

Simone Parniak¹; Vincent G DePaul^{1,2}; Clare Frymire²; Samuel DePaul²; Catherine Donnelly^{1,2}



PART 2

Advancing frameworks for age- and dementia-friendly community initiatives



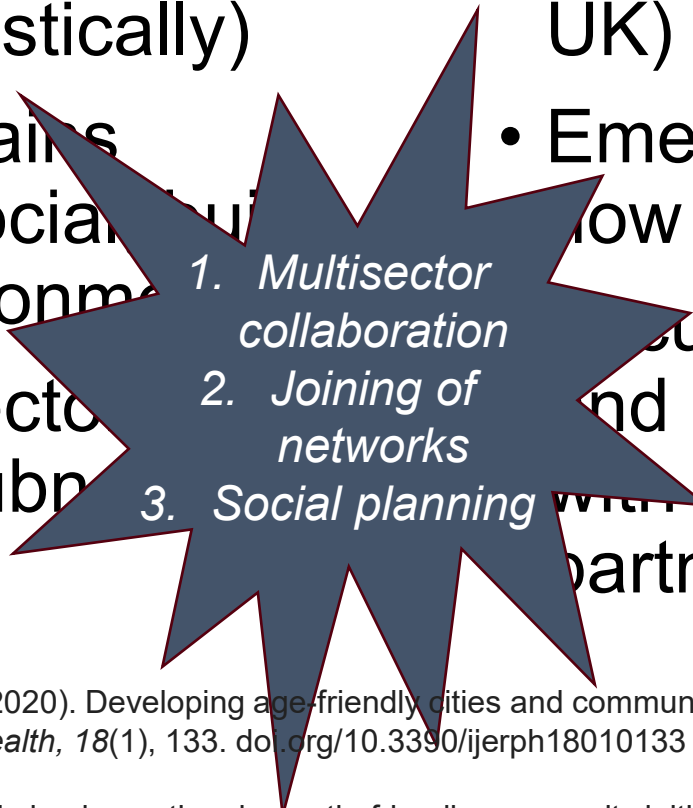
Brief Background

Age-Friendly Communities

- Spearheaded by the WHO and AARP (domestically)
- Highlights 8 domains encompassing social, physical, and service environments
- Centers public sector involvement at subnational level

Dementia-Friendly Communities

- Global movement (Japan, UK)
- Emerged in Minnesota and now backboned by USAging
- Focuses broadly on inclusion and supports of people living with dementia and their care partners in their communities

- 
1. Multisector collaboration
 2. Joining of networks
 3. Social planning

Rémillard-Boilard, S., Buffel, T., & Phillipson, C. (2020). Developing age-friendly cities and communities: eleven case studies from around the world. *International Journal of Environmental Research and Public Health*, 18(1), 133. doi.org/10.3390/ijerph18010133

Scher, C. J., & Greenfield, E. A. (2023). Variation in implementing dementia-friendly community initiatives: advancing theory for social change. *Geriatrics*, 8(2), 45. MDPI AG. doi.org/10.3390/geriatrics8020045

Integrating Age- and Dementia-Friendly Community Efforts

RESEARCH REPORT

MARCH 2016

Better Together: A Comparative Analysis of Age-Friendly and Dementia Friendly Communities

Natalie Turner and Lydia Morken

AARP
Real Possibilities
International
Affairs



Available at
<https://www.mass.gov/handbook/massachusetts-age-and-dementia-friendly-integration-toolkit>



[ps://www.alz.org/help-support/brain_health/10_ways_to_love_your_brain](https://www.alz.org/help-support/brain_health/10_ways_to_love_your_brain)

Brain Health is Part of Healthy Aging



<https://www.cdc.gov/chronicdisease/resources/infographic/healthy-aging.htm>

Greenfield, E A., & Pestine-Stevens, A. (2022, April). Aligning age- and dementia-friendly initiatives: What does it mean, and why should we consider it? In E. Kearns (Chair), *Strategic alignment of age and dementia-friendly communities*. Symposium conducted at the annual meeting of the American Society of Aging, New Orleans, LA.

Available at
<https://www.aarp.org/livable-communities/network-age-friendly-communities/info-2016/dementia-friendly-communities.html>

Theorizing Effects on Aging in Place



Hawe, P. (2015). Lessons from complex interventions to improve health. *Annual Review of Public Health*, 18(36), 307-323. doi: 10.1146/annurev-publhealth-031912-114421.

Scharlach, A. E. (2017). Aging in context: individual and environmental pathways to age-friendly communities. *The Gerontologist*, 57(4), 606-618. doi: 10.1093/geront/gnx017.

Thomas, W. H., & Blanchard, J. M. (2009). Moving beyond place: aging in community. *Generations*, 33(2), 12-17.

An isometric illustration of a series of grey rectangular blocks arranged in a staircase pattern, receding into the distance. Various stylized human figures are positioned on these blocks, engaged in different activities: some are standing and holding laptops or tablets, others are sitting on the blocks using devices, and one is sitting in a chair on a block. The background is a solid dark grey. The text 'PART 3' is centered in the upper half of the image, and 'Opportunities for research' is centered in the lower half, both in white.

PART 3

Opportunities for research

Research Can Help Improve Community Contexts for Aging in Place with Dementia



**Research as a tool
to help move from
programs/initiatives
to community
interventions**



**Research to
optimize the roles of
people with lived
experience involved
in the work**



**Research
consortiums to
support:**

- * People of the communities doing the work
- * Learning-and-action networks to support community leaders
- * Science for impact, equity, sustainability, and scalability



RUTGERS

School of Social Work
HUB FOR AGING COLLABORATION

Thank You!

Emily A. Greenfield, PhD

Professor, Social Work

Director, Hub for Aging Collaboration

egreenf@ssw.rutgers.edu

<https://socialwork.rutgers.edu/centers/hub-aging-collaboration/projects>

www.linkedin.com/in/emilyagreenfield

www.linkedin.com/company/agingcollab



@RUagingcollab



agingcollab@ssw.rutgers.edu