

Board on Environmental Change and Society

Division of Behavioral and Social Sciences and Education

Major transitions are on the horizon at the intersection of human activity and the global environment. Human societies themselves are being transformed, and these changes are interacting with and even accelerating environmental change. There is much debate about how to achieve long-term environmental sustainability and cope with unavoidable environmental impacts and dislocations.

MISSION

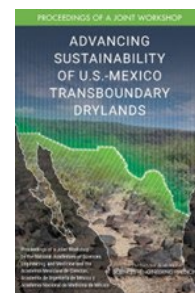
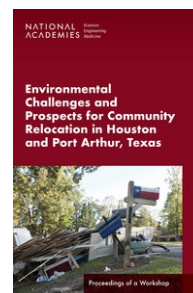
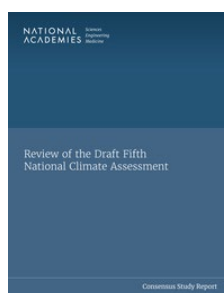
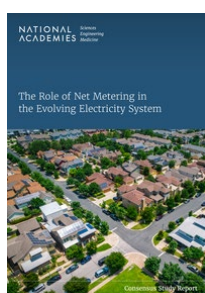
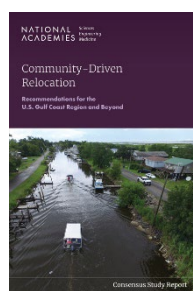
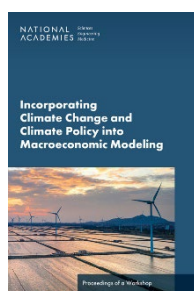
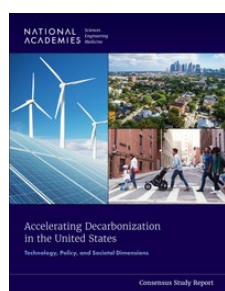
The Board on Environmental Change and Society (BECS) mobilizes social and behavioral sciences to identify equitable and effective solutions to the challenges at the intersection of environmental change and society. Such solutions must consider drivers of behavior and decision making at all scales, including individuals, communities, businesses and governments. Critical drivers include societal values, norms, socioeconomic factors, markets, and policies. The Board draws on interdisciplinary expertise to address the social, political, economic and equity dimensions of environmental change.

HISTORY

BECS evolved from the Committee on Human Dimensions of Global Change, which since 1989 has helped to guide research on the interactions between human activities and the environment. It provided a forum for linking the social and natural sciences in research, planning, and decision making. BECS continues in this tradition, while expanding on the types of issues that it may consider, to address emerging scientific, societal, and governmental concerns.

REPORTS

BECS has issued a broad array of consensus study reports and proceedings that bring science to bear on problems and questions faced by researchers, policy makers, and practitioners in a range of domains. Selected recent BECS publications are shown below. [Click Here](#) for a complete list of BECS publications.



BECS COMPRISES EXPERTISE IN

- Social, behavioral, and institutional change in the context of environmental change.
- Decision sciences, including both analysis and decision support.
- Human-environmental systems, including social-ecological interactions, transitions, adaptation, and resilience over various time scales.
- Economic policy and analysis, including economic drivers, impacts and responses, and evaluation of environmental outcomes.
- Climate, biophysical and biogeochemical processes, and ecology.
- Energy and natural resource management.
- Public and environmental health policy.
- Environmental governance, including risk, allocation, equity, diversity, regulatory, and justice issues.
- National and international sustainable development.

CURRENT & FORMER SPONSORS

- Alfred P. Sloan Foundation
- Billion Minds Institute
- David and Lucile Packard Foundation
- George and Cynthia Mitchell Endowment for Sustainability at the National Academies of Sciences, Engineering, and Medicine
- Gordon and Betty Moore Foundation
- Gulf Research Program
- Hewlett Foundation
- National Science Foundation
- Park Foundation
- U.S. Department of Energy
- U.S. Environmental Protection Agency

CURRENT & PROJECTS

- Consensus Study: Harnessing Social Science to Achieve Timely, Durable, Equitable and Resilient Energy Transition
- Climate Crossroads: Climate Resilient Communities Pathway
- Climate Security Roundtable
- Roundtable on Macroeconomics and Climate-related Risks and Opportunities

MORE INFORMATION ABOUT BECS

<https://www.nationalacademies.org/becs/about>

To download or purchase publications:
www.nap.edu | 1-888-624-837

BECS BOARD MEMBERS

Michael Vandenberg (*Chair*), Vanderbilt University; **Bilal M. Ayyub**, University of Maryland, College Park; **Eduardo S. Brondizio**, Indiana University-Bloomington; **Lisa Dilling**, Environmental Defense Fund; **Kenneth Gillingham**, Yale University; **Mary H. Hayden**, University of Colorado, Colorado Springs; **Stephen H. Linder**, University of Texas; **Glen MacDonald**, University of California, Los Angeles; **Jesse Ribot**, American University; **Jackie Qataliña Schaeffer**, Alaska Native Tribal Health Consortium; **Madeline Schomburg**, Energy Futures Initiative Foundation; **Gary E. Machlis**, Clemson University; **Benjamin Preston**, Pardee Graduate School, RAND; **Benjamin K. Sovacool**, Boston University; **Adelle Thomas**, Climate Analytics; **Cathy L. Whitlock**, Montana State University.



NATIONAL ACADEMIES

Sciences
Engineering
Medicine

The National Academies provide independent, trustworthy advice that advances solutions to society's most complex challenges.

www.nationalacademies.org